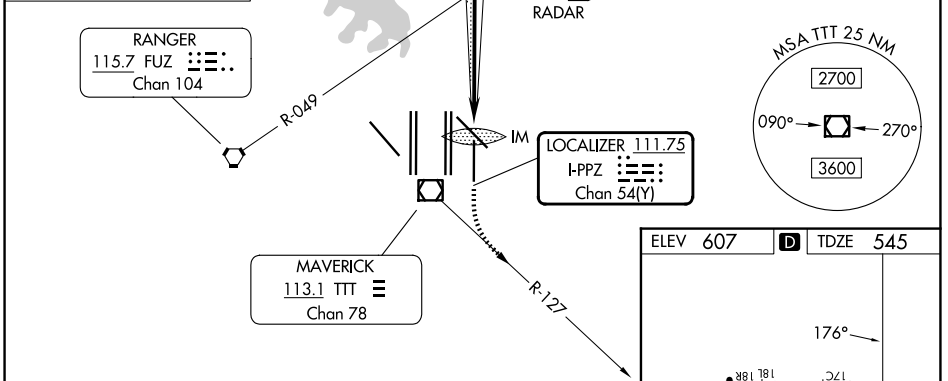
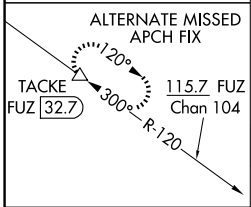
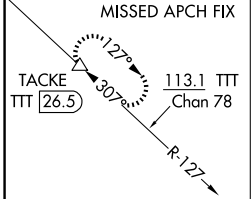


| | | |
|--|------------------------|---|
| LOC/DME I-PPZ 111.75 Chan 54 (Y) | APP CRS 176° | Rwy Ldg TDZE 545 Apt Elev 607 |
|--|------------------------|---|

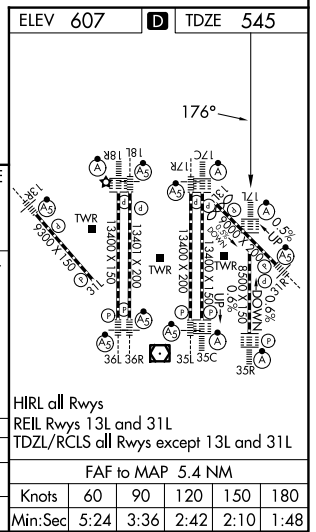
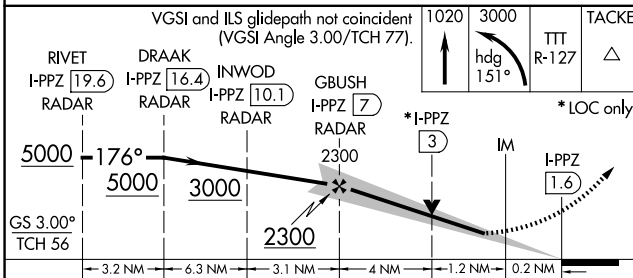
ILS or LOC RWY 17L

DALLAS-FORT WORTH INTL (DFW)

| | | |
|---|--------------------------|---|
| ▽ Simultaneous approach authorized with Rwy 17C/R and Rwy 18L/R. DME required. | ALSF-2 | MISSED APPROACH: Climb to 1020 then climbing left turn to 3000 on heading 151° and TTT VOR/DME R-127 to TACKE/TTT 26.5 DME and hold. |
| | D-ATIS 123.775 | LONE STAR APP CON 119.4 |
| | | GND CON 121.65 121.8 (E) 121.85 (W) |



RADAR REQUIRED



| | | | | |
|-----------|--------------------|-------------|---------|-------------|
| CATEGORY | A | B | C | D |
| S-ILS 17L | 745/18 200 (200-½) | | | |
| S-LOC 17L | 1040/24 | 495 (500-½) | 1040/50 | 495 (500-1) |

SC-2, 11 JUN 2026 to 09 JUL 2026

SC-2, 11 JUN 2026 to 09 JUL 2026