

LOC/DME I-RRA 110.9 Chan 46	APP CRS 311°	Rwy Ldg 8373 TDZE 523 Apt Elev 607
---	------------------------	---

ILS or LOC RWY 31R

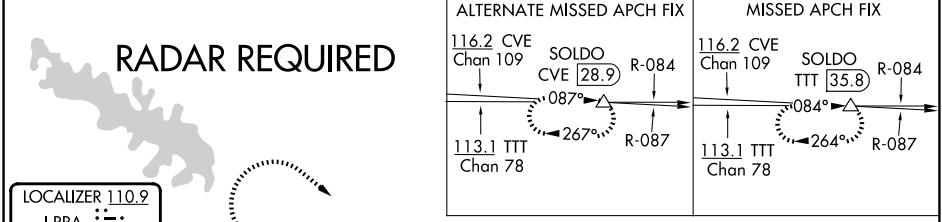
DALLAS-FORT WORTH INTL (DFW)

Simultaneous approach authorized. DME required.
For inop ALS increase S-LOC 31R GUKSE FIX minimums
Cat C/D visibility to RVR 5500.



MISSED APPROACH: Climb to 1100 then climbing
right turn to 3000 on heading 125° and TTT VOR/
DME R-084 to SOLD0/TTT 35.8 DME and hold.

D-ATIS 123.775	LONE STAR APP CON 135.5 125.2	DFW TOWER 126.55 127.5 (E) 124.15 134.9 (W)	GND CON 121.65 121.8 (E) 121.85 (W)
--------------------------	---	---	---

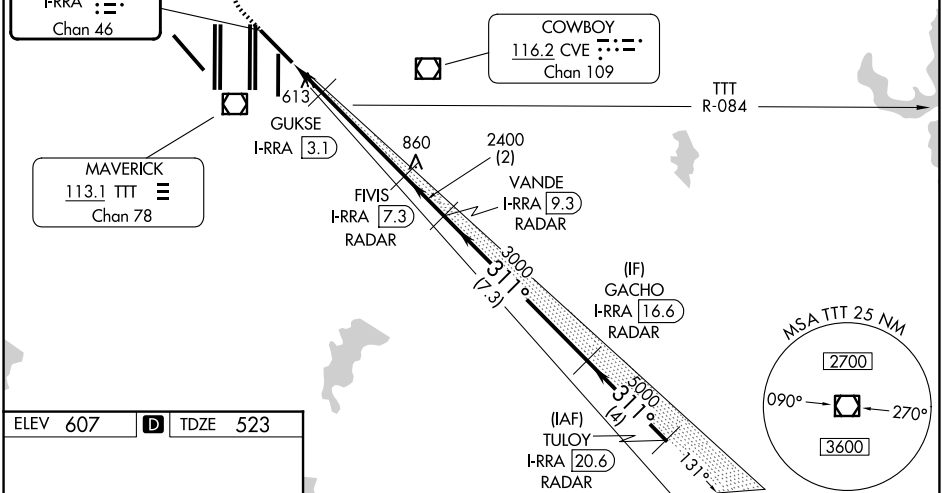


RADAR REQUIRED

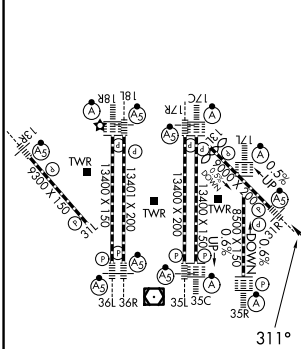
LOCALIZER **110.9**
I-RRA
Chan **46**

COWBOY
116.2 CVE
Chan **109**

MAVERICK
113.1 TTT
Chan **78**



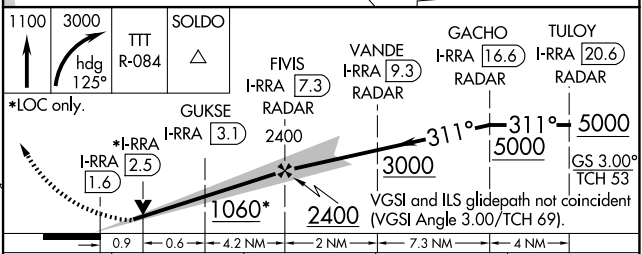
ELEV 607	D	TDZE 523
-----------------	----------	-----------------



HIRL all Rwys
REIL Rwys 13L and 31L
TDZL/RCLS all Rwys except 13L and 31L

FAF to MAP 5.8 NM

Knots	60	90	120	150	180
Min:Sec	5:48	3:52	2:54	2:19	1:56



CATEGORY	A	B	C	D
S-ILS 31R	723/18		200 (200-½)	
S-LOC 31R	1060/24	537 (500-½)	1060/55	537 (500-1¼)
GUKSE FIX MINIMUMS				
S-LOC 31R	880/24	357 (300-½)	880/30	357 (300-¾)

SC-2, 11 JUN 2026 to 09 JUL 2026

SC-2, 11 JUN 2026 to 09 JUL 2026