

WAAS CH 86732 W31A	APP CRS 314°	Rwy Ldg TDZE Apt Elev	4602 1137 1137
--	------------------------	-----------------------------	---

RNAV (GPS) RWY 31

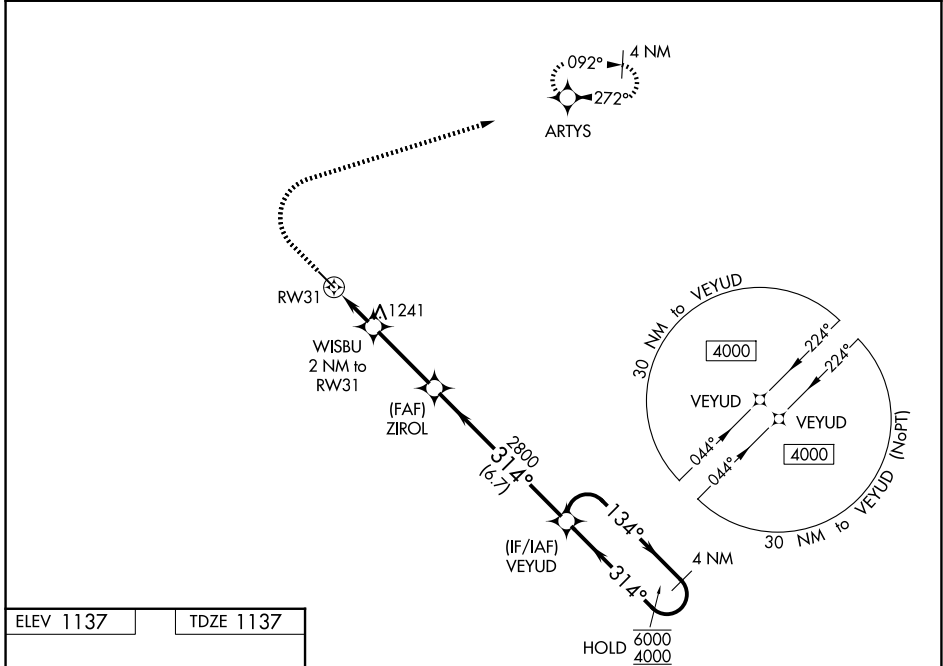
IOWA FALLS MUNI (IFA)

RNP APCH - GPS.

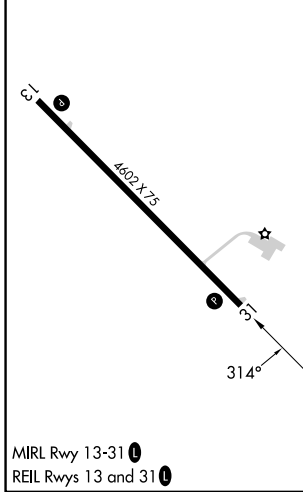
▼ Rwy 31 helicopter visibility reduction below 1 SM NA. For uncompensated Baro-VNAV systems, LNAV/VNAV NA below -17°C or above 54°C. Straight-in Rwy 31 NA at night, Circling Rwy 31 NA at night.

MISSED APPROACH: Climb to 1600 then climbing right turn to 4000 direct ARTYS and hold, continue climb-in-hold to 4000.

AWOS-3 120.425	DES MOINES APP CON * 118.9 251.15	UNICOM 122.8 (CTAF)
--------------------------	---	-------------------------------



ELEV 1137	TDZE 1137
-----------	-----------



1600	4000	ARTYS	VGSI and RNAV glidepath not coincident (VGSI Angle 3.00/TCH 44).	4 NM Holding Pattern
↑	↷	✧		
WISBU 2 NM to RW31	ZIROL 2800	VEYUD	1800	6000 4000
1 NM to RW31	1 NM to RW31	3.1 NM	6.7 NM	GP 3.00° TCH 40
134°	314°	134°	314°	
CATEGORY	A	B	C	D
LPV DA		1387-1	250 (300-1)	
LNAV/VNAV DA		1398-1	261 (300-1)	
LNAV MDA		1500-1	363 (400-1)	
CIRCLING	1540-1 403 (500-1)	1620-1 483 (500-1)	1760-1¾ 623 (700-1¾)	1800-2 663 (700-2)

IOWA FALLS, IOWA
Amdt 2B 16MAY24

42°28'N-93°16'W

RNAV (GPS) RWY 31

NC-3, 11 JUN 2026 to 09 JUL 2026

NC-3, 11 JUN 2026 to 09 JUL 2026