

(ELANR9.ELANR) 26078

AL-6063 (FAA)

# ELANR NINE DEPARTURE (RNAV)

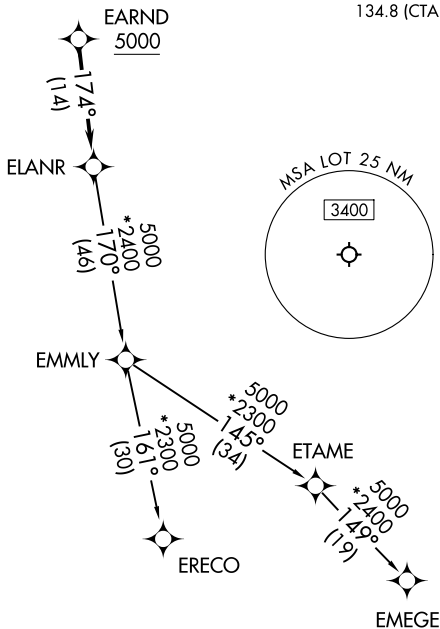
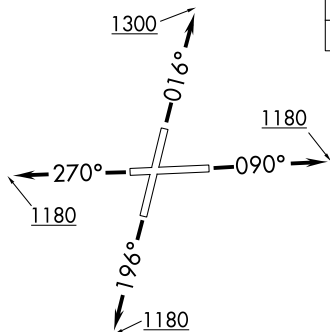
LEWIS UNIVERSITY (LOT)  
CHICAGO/ROMEOVILLE, ILLINOIS

RNAV 1 - DME/DME/IRU or GPS.

RADAR required.

CHICAGO DEP CON  
119.35 354.075  
D-ATIS  
126.675  
GND CON  
120.425  
LEWIS TOWER \*  
134.8 (CTAF)

**TOP ALTITUDE:  
ASSIGNED BY ATC**



### TAKEOFF MINIMUMS:

Rwys 9, 20, 27: Standard.  
Rwy 2: Standard with minimum  
climb of 420'/NM to 1200.

NOTE: Turbojet departures maintain  
250K until advised by ATC.  
NOTE: EMMLY Transition: For aircraft  
inbound to Indianapolis Terminal  
Area, or as assigned by ATC.

NOTE: Chart not to scale.

### DEPARTURE ROUTE DESCRIPTION

- TAKEOFF RUNWAY 2: Climb on heading 016° to 1300, for vectors to EARND, thence. . . .
- TAKEOFF RUNWAY 9: Climb on heading 090° to 1180, for vectors to EARND, thence. . . .
- TAKEOFF RUNWAY 20: Climb on heading 196° to 1180, for vectors to EARND, thence. . . .
- TAKEOFF RUNWAY 27: Climb on heading 270° to 1180, for vectors to EARND, thence. . . .

. . . on track 174° to ELANR, then on transition, maintain ATC assigned altitude. Expect filed altitude 10 minutes after departure.

- EMEGE TRANSITION (ELANR9.EMEGE):
- EMMLY TRANSITION (ELANR9.EMMLY):
- ERECO TRANSITION (ELANR9.ERECO):

ELANR NINE DEPARTURE (RNAV)  
(ELANR9.ELANR) 19MAR26

CHICAGO/ROMEOVILLE, ILLINOIS  
LEWIS UNIVERSITY (LOT)

EC-3, 11 JUN 2026 to 09 JUL 2026

EC-3, 11 JUN 2026 to 09 JUL 2026