

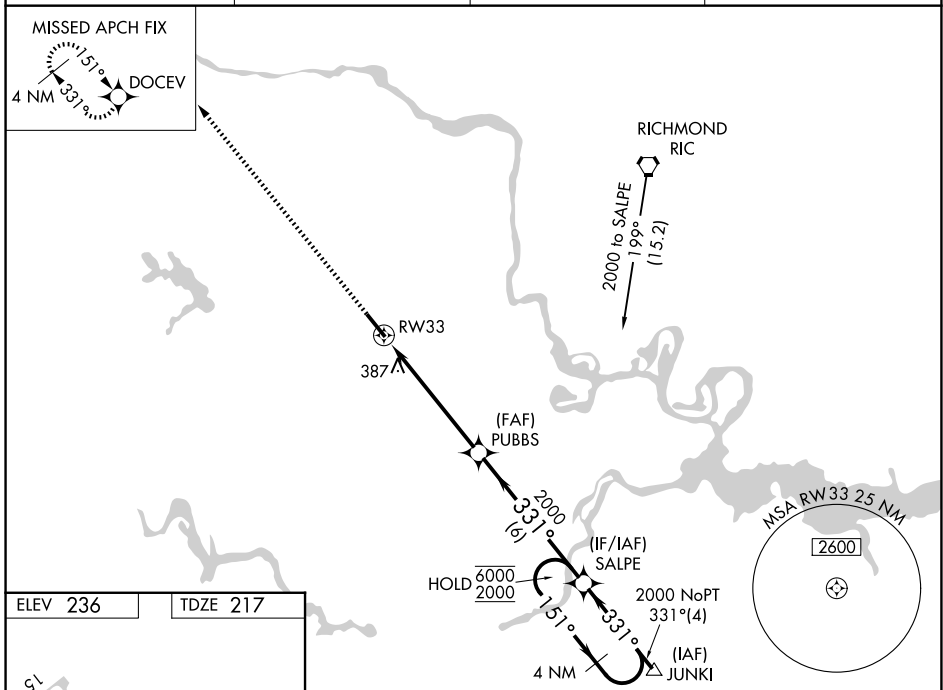
WAAS CH <b>56221</b> <b>W33A</b>	APP CRS <b>331°</b>	Rwy Ldg TDZE Apt Elev	<b>5500</b> <b>217</b> <b>236</b>
--	------------------------	-----------------------------	---

# RNAV (GPS) RWY 33

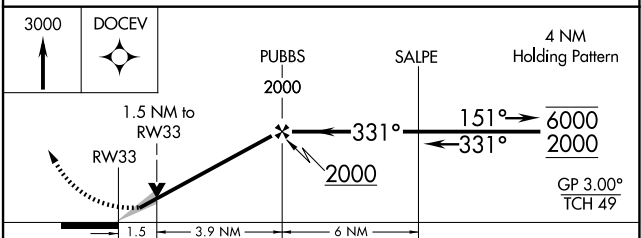
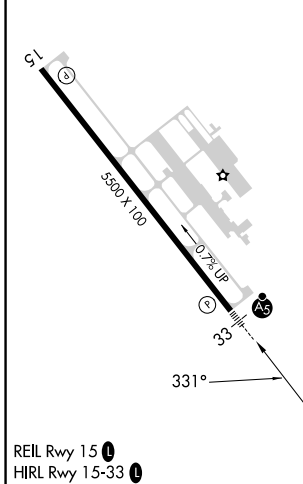
RICHMOND EXEC/CHESTERFIELD COUNTY (F'CI)

RNP APCH - GPS.	MALSR MISSED APPROACH Climb to 3000 direct DOCEV and hold.
⚠ For uncompensated Baro-VNAV systems, LNAV/VNAV NA below -15°C or above 54°C. Baro-VNAV and VDP NA when using RIC altimeter setting. For inop ALS, increase LPV all visibilities to ¾ SM, increase LNAV/VNAV all visibilities to 1 ¾, and increase LNAV visibility Cats C/D to 1 ¾ SM. When local altimeter setting not received, use RIC altimeter setting and increase LPV DA to 547 feet; increase LNAV/VNAV DA to 757 feet, increase all MDAs 40 feet and LNAV visibility Cat C/D ½ SM, and Circling visibility Cat C/D ½ SM.	

AWOS-3PT <b>128.625</b>	POTOMAC APP CON <b>126.75 307.2</b>	CLNC DEL <b>124.6</b>	UNICOM <b>123.05 (CTAF)</b>
----------------------------	--	--------------------------	--------------------------------



ELEV 236	TDZE 217
----------	----------



CATEGORY	A	B	C	D
LPV DA	510-1/2 293 (300-1/2)			
LNAV/VNAV DA	720-1 503 (500-1)			
LNAV MDA	720-1/2 503 (500-1/2)	720-1 503 (500-1)		
CIRCLING	720-1 484 (500-1)	820-1 584 (600-1)	820-1/2 584 (600-1/2)	1020-2 1/2 784 (800-2/2)

# RNAV (GPS) RWY 33

NE-3, 11 JUN 2026 to 09 JUL 2026

NE-3, 11 JUN 2026 to 09 JUL 2026