

# BORRN SIX DEPARTURE (RNAV)

920Z UNR 60 of 2026 UNR 14 '9-C-S

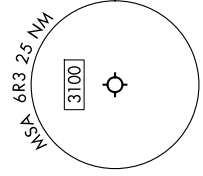
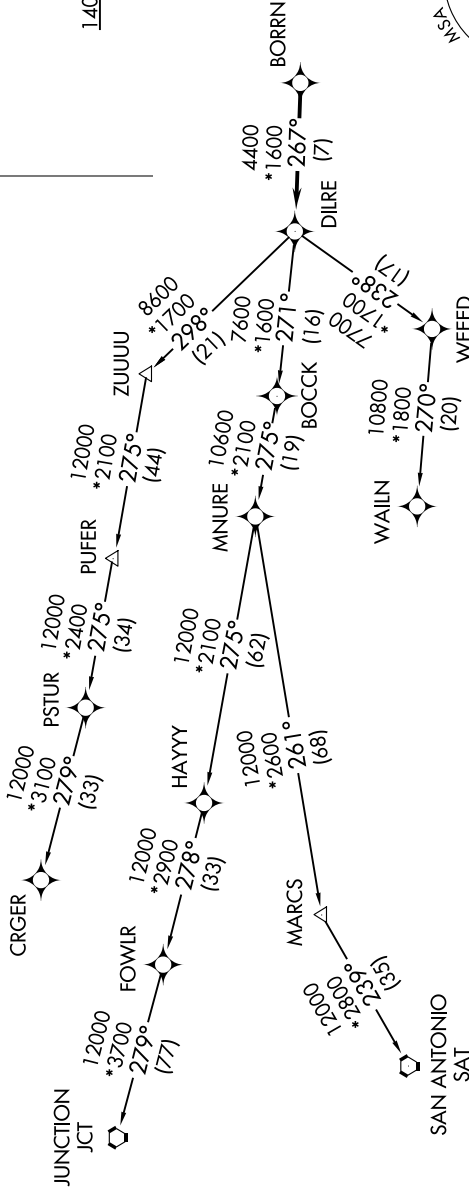
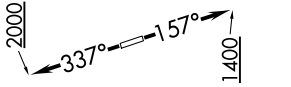
AWOS-3  
119.325  
CTAF  
123.0  
HOUSTON DEP CON  
119.7 281.4

### TAKEOFF MINIMUMS

Rwy 16: Standard with minimum  
climb of 500'/NM to 660.  
Rwy 34: Standard with minimum  
climb of 500'/NM to 1000.

RNAV 1 - DME/DME/IRU or GPS.  
RADAR required.

**TOP ALTITUDE:  
ASSIGNED BY ATC**



NOTE: Chart not to scale.

NOTE: CRGR-TRANSITION ATC assigned only  
for aircraft departing 54T, AXH, EFD, GLS,  
HPY, IWS, LBX, LVJ, SGR, TME, T00, T41.

(CONTINUED ON FOLLOWING PAGE)

SC-5, 11 JUN 2026 to 09 JUL 2026

# BORRN SIX DEPARTURE (RNAV)