

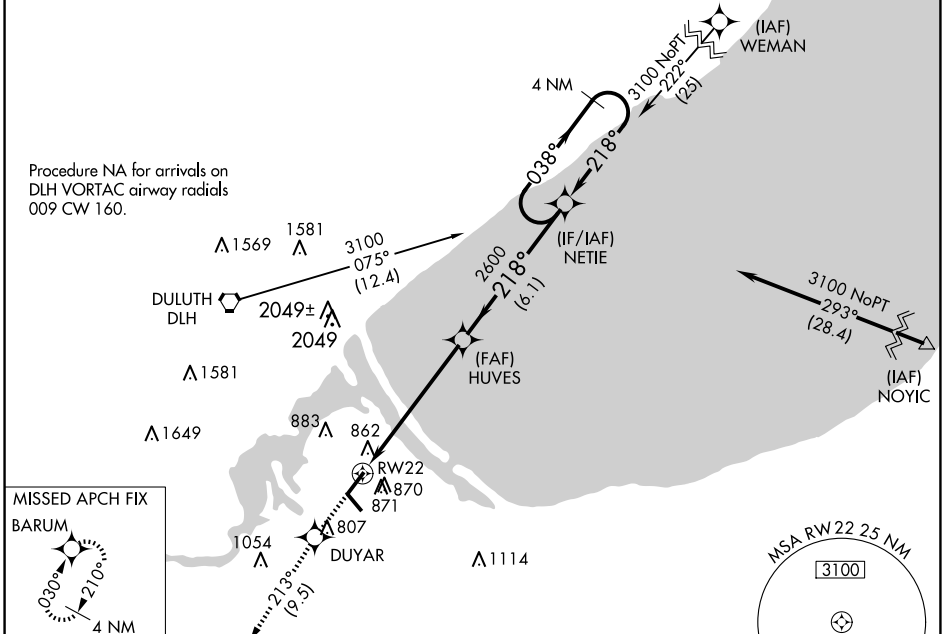
WAAS CH 69429 W22A	APP CRS 218°	Rwy Idg TDZE Apt Elev	5100 666 674
--	------------------------	-----------------------------	---

RNAV (GPS) RWY 22

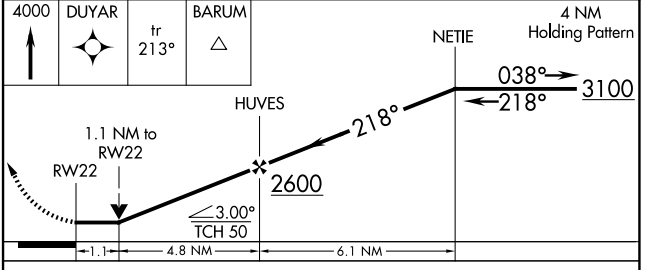
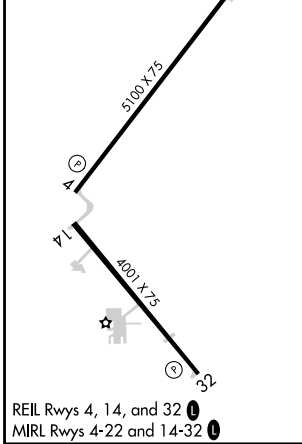
RICHARD I BONG (SUW)

RNP APCH.	MISSED APPROACH: Climb to 4000 direct DUYAR and on track 213° to BARUM and hold, continue climb-in-hold to 4000.
<p>▼ Rwy 22 helicopter visibility reduction below $\frac{3}{4}$ SM NA.</p> <p>▲ When local altimeter setting not received, use Sky Harbor altimeter setting.</p>	

AWOS-3 120.35	DULUTH APP CON 125.45 233.7	CLNC DEL 124.8	UNICOM 122.7 (CTAF) 0
-------------------------	---------------------------------------	--------------------------	---------------------------------



ELEV 674	TDZE 666
----------	----------



CATEGORY	A	B	C	D
LP MDA	1060-1	394 (400-1)	1060-1½	394 (400-1½)
LNAV MDA	1240-1	574 (600-1)	1240-1½	574 (600-1½)
CIRCLING	1240-1	566 (600-1)	1360-2 686 (700-2)	1360-2¼ 686 (700-2¼)

EC-3, 11 JUN 2026 to 09 JUL 2026

EC-3, 11 JUN 2026 to 09 JUL 2026