

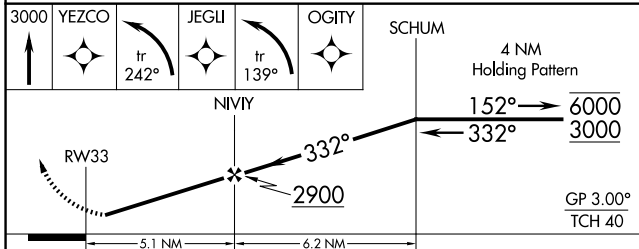
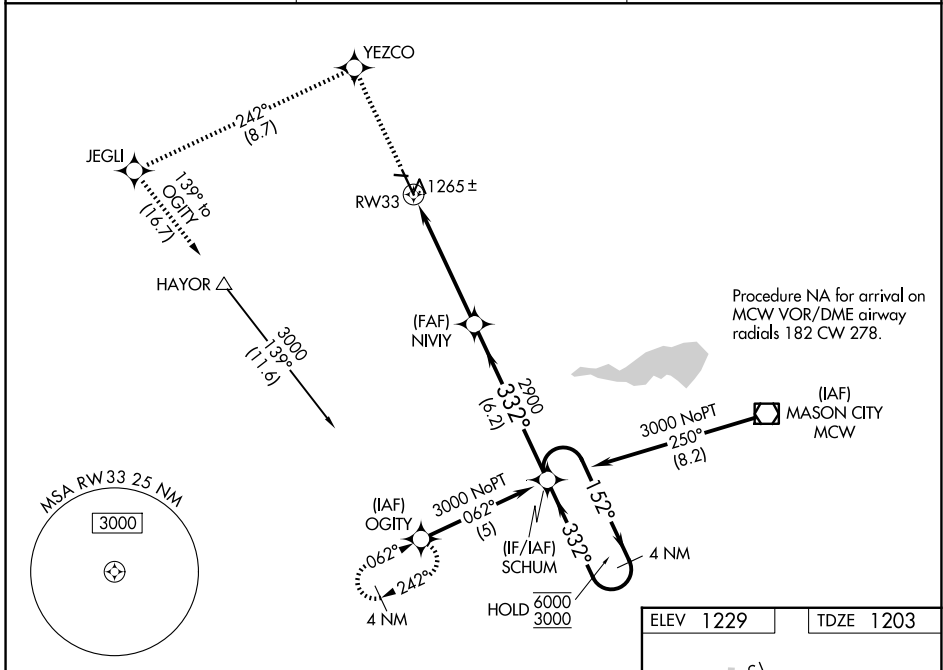
WAAS CH 78016 W33A	APP CRS 332°	Rwy Ldg TDZE 1203 Apt Elev 1229
--	------------------------	---

RNAV (GPS) RWY 33

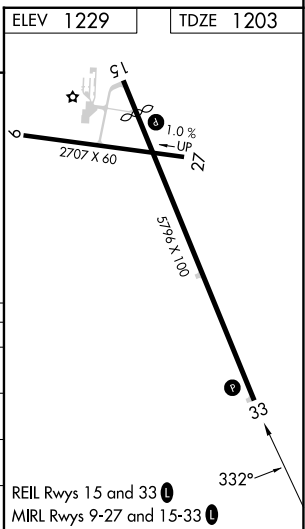
FOREST CITY MUNI/TRIMBLE FLD (FXY)

RNP APCH - GPS.	MISSED APPROACH: Climb to 3000 direct YEZCO and left turn on track 242° to JEGLI and left turn on track 139° to OGITY and hold.
<p>▼ Rwy 33 helicopter visibility reduction below 1 SM NAVA.</p> <p>▲ For uncompensated Baro-VNAV systems, LNAV/VNAV NA below -17°C or above 54°C. Straight-in Rwy 33 NA at night, Circling Rwy 9, 27, 33 NA at night.</p>	

AWOS-3 123.925	MINNEAPOLIS CENTER 127.3 257.675	UNICOM 122.8 (CTAF) 0
--------------------------	--	---------------------------------



CATEGORY	A	B	C	D
LPV DA		1453-1	250 (300-1)	
LNAV/VNAV DA		1535-1¼	332 (400-1¼)	
LNAV MDA		1520-1	317 (300-1)	
CIRCLING	1660-1 431 (500-1)	1760-1 531 (600-1)	2040-2½ 811 (900-2½)	2040-2¾ 811 (900-2¾)



NC-3, 11 JUN 2026 to 09 JUL 2026

NC-3, 11 JUN 2026 to 09 JUL 2026