

| | | |
|---|------------------------|--|
| VOR/DME MCW 114.9 Chan 96 | APP CRS 297° | Rwy Ldg TDZE Apt Elev N/A N/A 1229 |
|---|------------------------|--|

VOR-A

FOREST CITY MUNI/TRIMBLE FLD (FXY)

DME required.

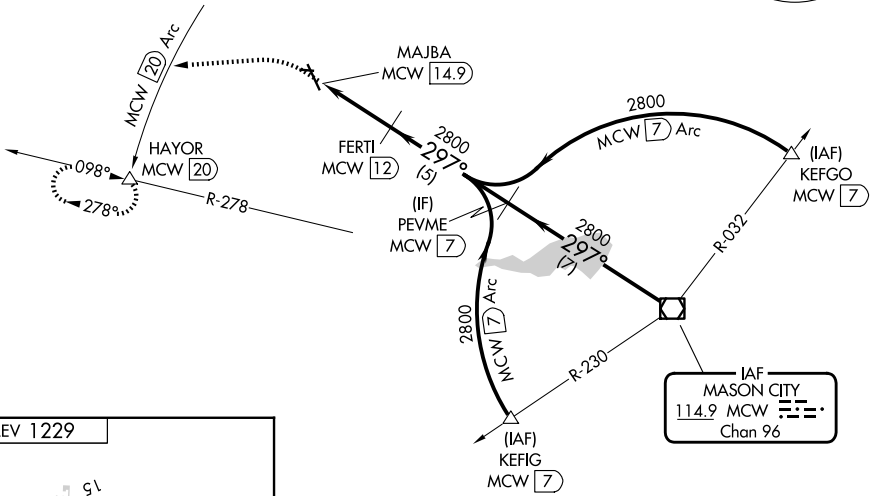
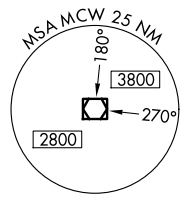
⚠ When local altimeter setting not received use Mason City altimeter setting and increase all MDA 40 feet. Circling to Rwy 9, 27 33 NA at night.

MISSED APPROACH: Climb to 3000 on heading 260° to MCW 20 DME Arc and on MCW 20 DME Arc counterclockwise to HAYOR/20 DME and hold.

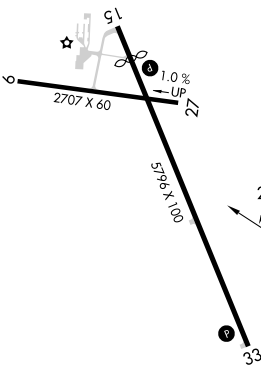
AWOS-3
123.925

MINNEAPOLIS CENTER
127.3 257.675

UNICOM
122.8 (CTAF)



ELEV 1229



Procedure NA for arrivals on MCW VOR/DME airway radials 278 CW 343.

| | | | | | | |
|----------|-----------------------|--------------------------------------|------------|-----------------|----------------|----------------|
| | 3000 ↑ hdg 260° | MCW 20 Arc counterclockwise | HAYOR △ | FERTI MCW 12 | PEVME MCW 7 | MCW VOR/DME |
| | | MAJBA MCW 14.9 | | 2800 | 2800 | 297° 2800 |
| | | 2.9 NM | 5 NM | 7 NM | | |
| CATEGORY | A | B | C | D | | |
| CIRCLING | 1680-1 451 (500-1) | 1760-1 531 (600-1) | | | NA | |

REIL Rws 15 and 33 **Ⓛ**
MIRL Rws 9-27 and 15-33 **Ⓛ**

NC-3, 11 JUN 2026 to 09 JUL 2026

NC-3, 11 JUN 2026 to 09 JUL 2026