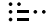


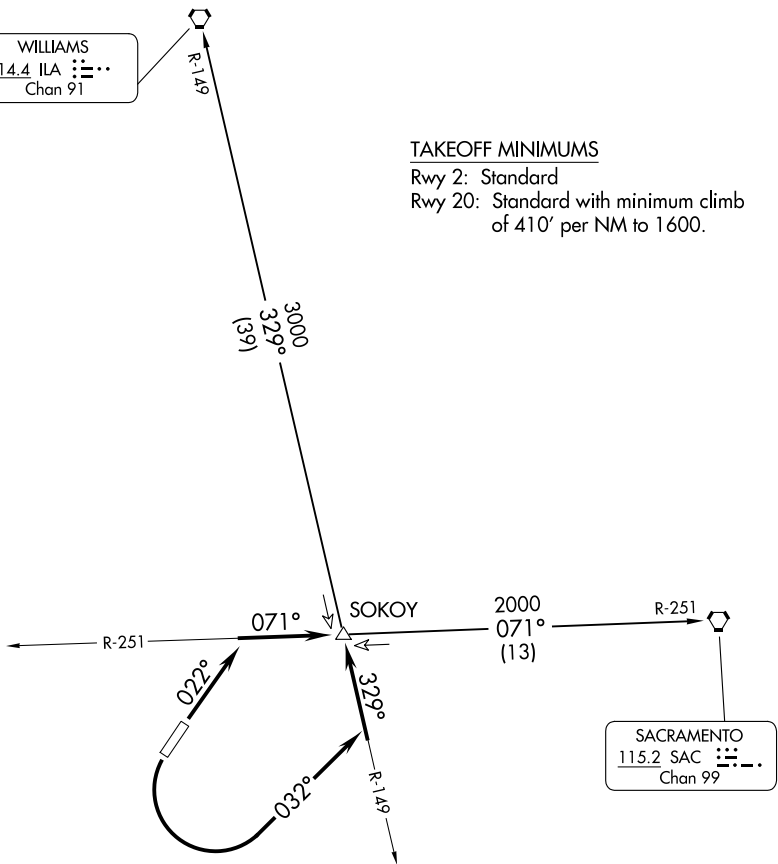
TRAVIS DEP CON
128.4 281.45

**TOP ALTITUDE:
ASSIGNED BY ATC**

WILLIAMS
114.4 ILA 
Chan 91

TAKEOFF MINIMUMS

Rwy 2: Standard
Rwy 20: Standard with minimum climb
of 410' per NM to 1600.



NOTE: Chart not to scale.

DEPARTURE ROUTE DESCRIPTION

TAKEOFF RUNWAY 2: Climb via heading 022°, intercept SAC R-251 to SOKOY/
SAC 13 DME.

TAKEOFF RUNWAY 20: Turn left heading 032°, intercept ILA R-149 to SOKOY/
ILA 39 DME.

SACRAMENTO TRANSITION (SOKOY3.SAC): From over SOKOY on SAC R-251 to
SAC VORTAC.

WILLIAMS TRANSITION (SOKOY3.ILA): From over SOKOY on ILA R-149 to
ILA VORTAC.