

RNAV (GPS) Y RWY 23

NORTH VERNON (OVO)

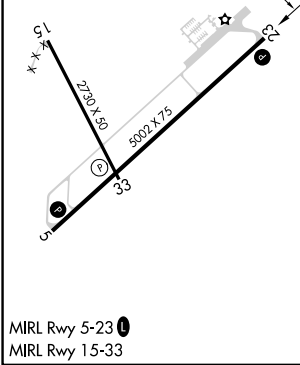
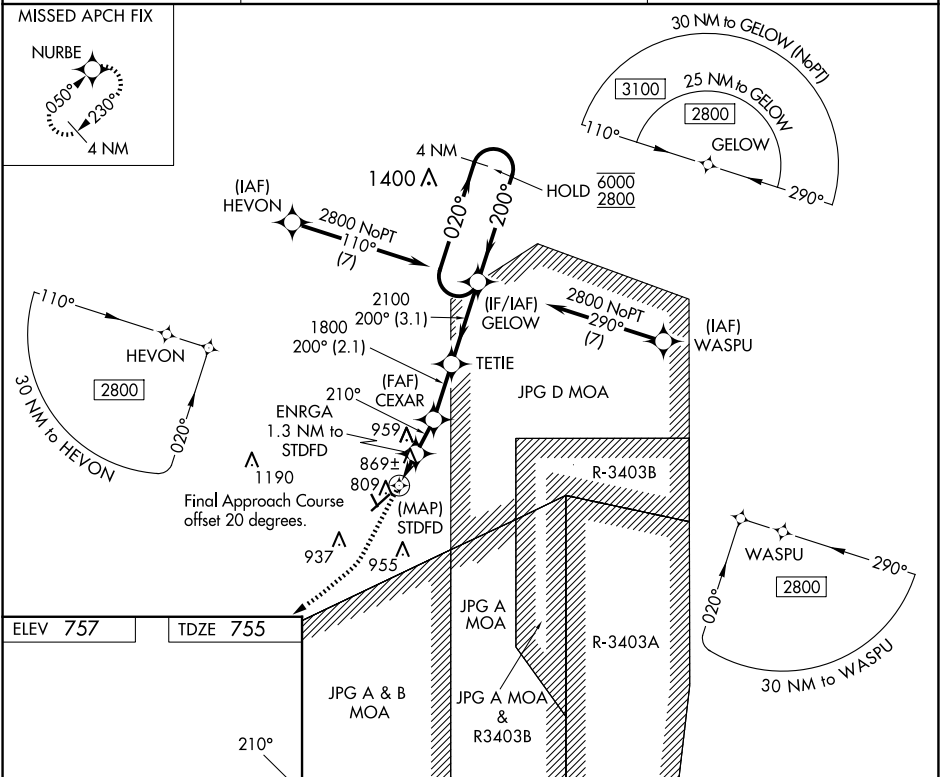
APP CRS	Rwy Idg	5002
210°	TDZE	755
	Apt Elev	757

RNP APCH - GPS.

NA Circling to Rwy 15, 33 NA at night. When local altimeter setting not received, use Shelbyville altimeter setting and increase all MDAs 100 feet, and LNAV visibility Cat C ¾ SM, and Circling visibility Cat C ¼ SM. VDP NA when using Shelbyville Muni altimeter setting.

MISSED APPROACH:
Climb to 1200 then climbing right turn to 2700 direct NURBE and hold.

AWOS-3 120.625	INDIANAPOLIS APP CON 134.85 317.8	UNICOM 122.7 (CTAF)
--------------------------	---	-------------------------------



ELEV 757	TDZE 755	VGSI and descent angles not coincident (VGSI Angle 3.00/TCH 27).		GELOW 4 NM Holding Pattern
1200	2700	NURBE	ENRGA 1.3 NM to STDFD	TETIE
			0.6 NM to STDFD	GELOW
			≤ 3.00° TCH 40	1800
			1360	2100
			0.5	0.6
			0.7	1.4 NM
			2.1 NM	3.1 NM

CATEGORY	A	B	C	D
LNAV MDA	1120-1 365 (400-1)			NA
CIRCLING	1180-1 423 (500-1)	1300-1 543 (600-1)	1300-1½ 543 (600-1½)	NA

EC-2, 11 JUN 2026 to 09 JUL 2026

EC-2, 11 JUN 2026 to 09 JUL 2026