

WAAS CH <b>45819</b> <b>W27A</b>	APP CRS <b>275°</b>	Rwy Ldg TDZE Apt Elev	<b>5005</b> <b>752</b> <b>752</b>
--	------------------------	-----------------------------	---

# RNAV (GPS) RWY 27

DONALD P MILLER (FZI)

RNP APCH.

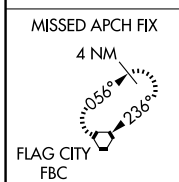
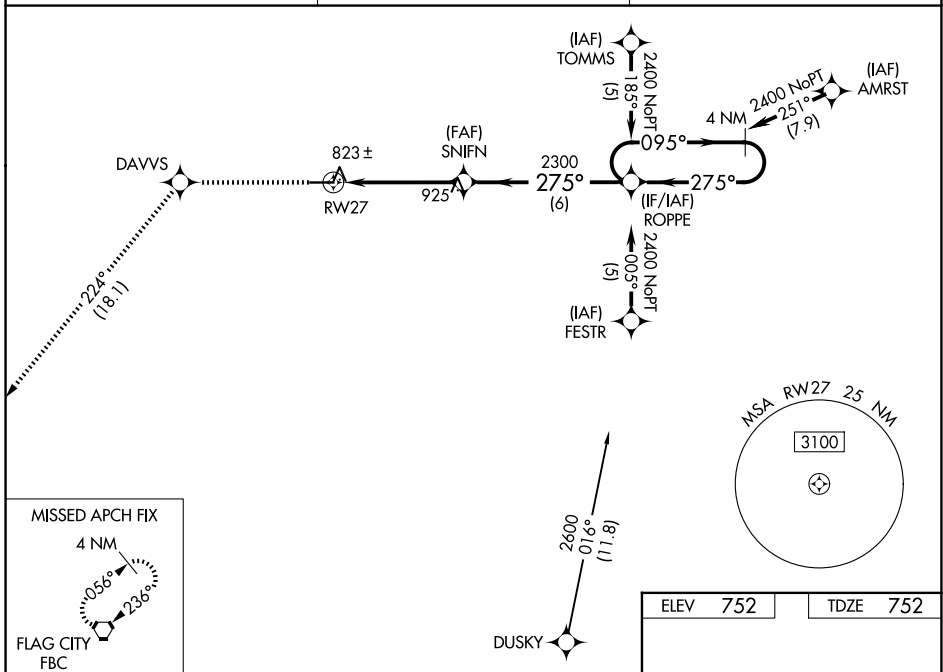
**NA** For uncompensated Baro-VNAV systems, LNAV/VNAV NA below -16°C (4°F) or above 54°C (130°F). Baro-VNAV and VDP NA when using Findlay altimeter setting. When local altimeter setting not received, use Findlay altimeter setting and increase all DA 47 feet and all MDA 60 feet, increase LNAV/VNAV all Cats and Circling Cat C visibility ¼ mile.

MISSED APPROACH: Climb to 2500 direct DAVVS and on track 224° to FBC VORTAC and hold.

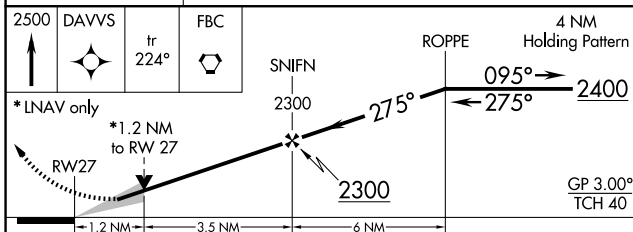
AWOS-3  
**124.625**

TOLEDO APP CON  
**126.1 307.0**

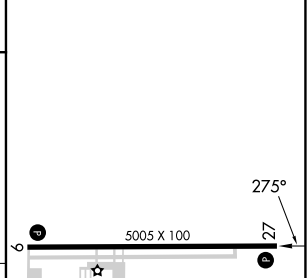
UNICOM  
**122.7 (CTAF) 0**



ELEV	752	TDZE	752
------	-----	------	-----



CATEGORY	A	B	C	D
LPV DA	1002-1 250 (300-1)			NA
LNAV/VNAV DA	1131-1¼ 379 (400-1¼)			NA
LNAV MDA	1160-1 408 (500-1)		1160-1¼ 408 (500-1¼)	NA
CIRCLING	1280-1 528 (600-1)	1320-1 568 (600-1)	1400-1¾ 648 (700-1¾)	NA



REIL Rwy 9 and 27 0
MRL Rwy 9-27 0

EC-2, 11 JUN 2026 to 09 JUL 2026

EC-2, 11 JUN 2026 to 09 JUL 2026