

WAAS CH 58228 W36A	APP CRS 357°	Rwy Idg TDZE Apt Elev	4100 1242 1250
--	------------------------	-----------------------------	---

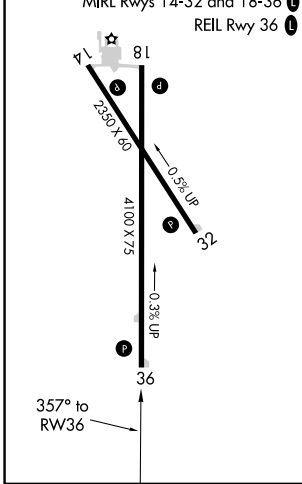
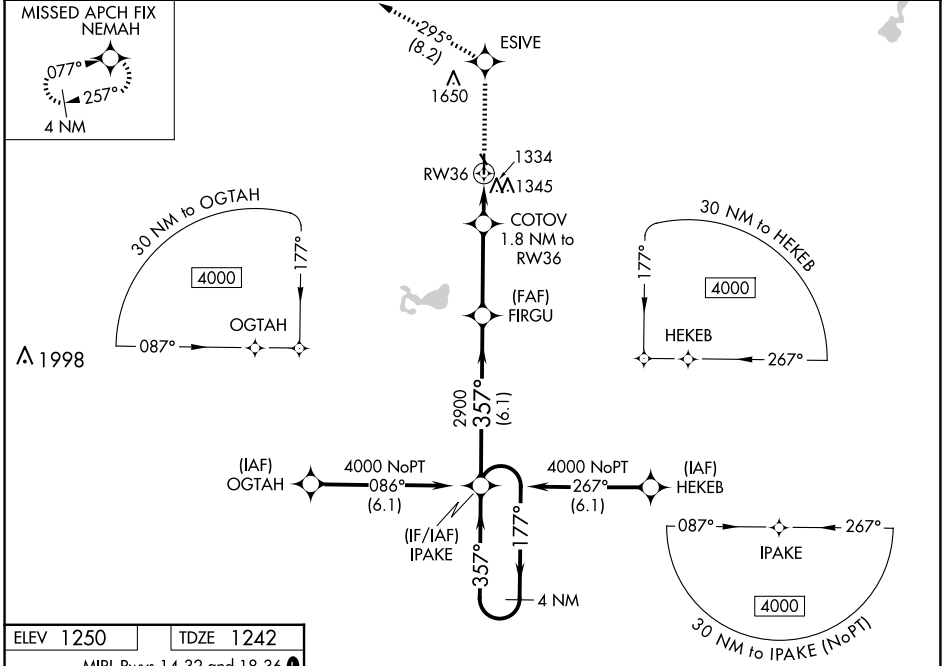
RNAV (GPS) RWY 36

SAC CITY MUNI (SKI)

▼ Night landing: Rwy 14 NA. Baro-VNAV NA. DME/DME RNP-0.3 NA.
▲ NA Use Carroll altimeter setting; when not received, use Denison altimeter setting and increase all DA 15 feet and all MDA 20 feet, increase LNAV/VNAV visibility 1/8 mile all Cats.

MISSED APPROACH: Climb to 4000 direct ESIVE and on track 295° to NEMAH and hold.

CIN AWOS-3 118.025	MINNEAPOLIS CENTER 134.0 288.3	UNICOM 122.8 (CTAF) 0
------------------------------	--	---------------------------------



VGSi and RNAV glidepath not coincident (VGSi Angle 3.00/TCH 28).		4000	ESIVE	tr 295°	NEMAH
4 NM Holding Pattern IPAKE		4000	ESIVE	tr 295°	▲
GP 3.00° TCH 40		4000	ESIVE	tr 295°	▲
FIRGU 2900		4000	ESIVE	tr 295°	▲
COTOV 1.8 NM to RW36		4000	ESIVE	tr 295°	▲
RW36		4000	ESIVE	tr 295°	▲
*1820		4000	ESIVE	tr 295°	▲
6.1 NM		4000	ESIVE	tr 295°	▲
3.3 NM		4000	ESIVE	tr 295°	▲
1.8 NM		4000	ESIVE	tr 295°	▲
CATEGORY	A	B	C	D	
LPV DA	1499-1	257 (300-1)			NA
LNAV/VNAV DA	1549-1	307 (300-1)			NA
LNAV MDA	1660-1	418 (500-1)			NA
CIRCLING	1740-1	490 (500-1)			NA

NC-3, 11 JUN 2026 to 09 JUL 2026

NC-3, 11 JUN 2026 to 09 JUL 2026