

WAAS CH 70407 W29A	APP CRS 291°	Rwy Ldg TDZE Apt Elev	5480 127 145
--	------------------------	-----------------------------	---

RNAV (GPS) RWY 29

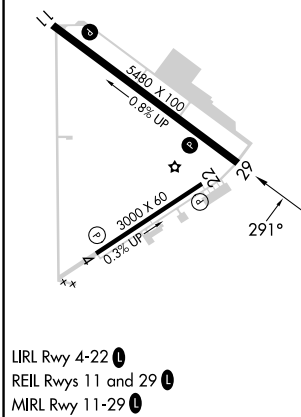
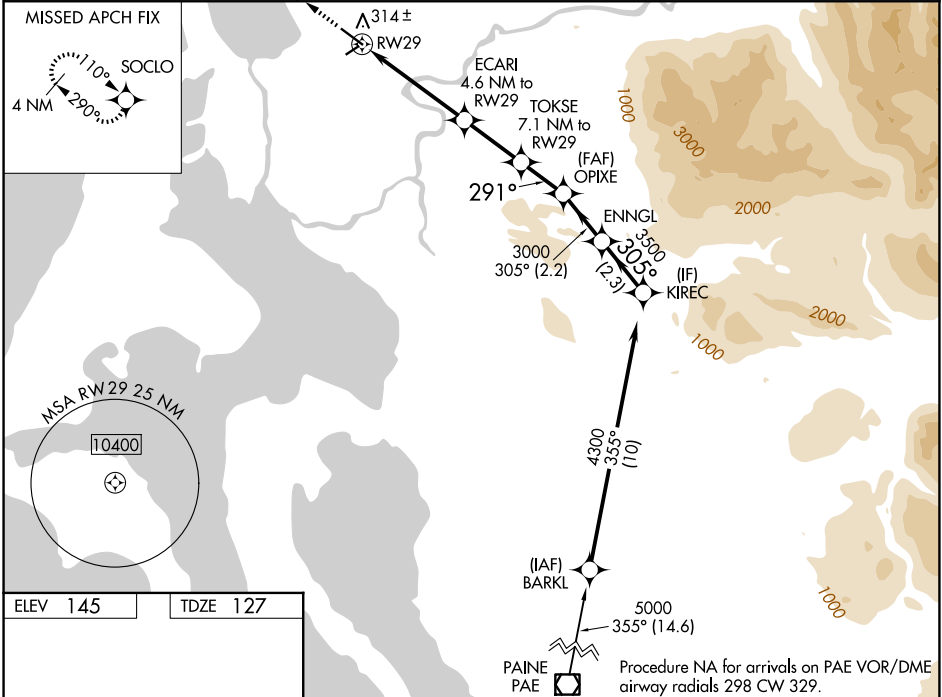
SKAGIT RGNL (BVS)

RNP APCH.

▼ For uncompensated Baro-VNAV systems, LNAV/VNAV NA below -15°C or above 54°C.
 ▲ Baro-VNAV and VDP NA when using Friday Harbor altimeter setting. When local altimeter setting not received use Friday Harbor altimeter setting; increase LPV DA to 438 feet, LNAV/VNAV DA to 536 feet and all Cats visibility ¼ SM; increase all MDA 60 feet.

MISSED APPROACH: Climb to 4000 direct SOCLO and hold, continue climb-in-hold to 4000.

AWOS-3 121.125	WHIDBEY APP CON 120.7 270.8	UNICOM 123.075 (CTAF)
--------------------------	---------------------------------------	---------------------------------



ELEV 145	TDZE 127					
4000	SOCLO					
*LNAV only						
RWY 29	1.4 NM	3.2 NM	2.5 NM	1.9 NM	2.2 NM	2.3 NM
ECARI 4.6 NM to RWY 29	TOKSE 7.1 NM to RWY 29	OPIXE 3000	ENNGL 3500	KIREC 4300		
1600*	2400*	3000	305°	4300		
					GP 3.00°	TCH 42
CATEGORY	A	B	C	D		
LPV DA	377-7/8		250 (300-7/8)			
LNAV/VNAV DA	475-1 1/4		348 (400-1 1/4)			
LNAV MDA	580-1	453 (500-1)	580-1 3/8	453 (500-1 3/8)		

NW-1, 11 JUN 2026 to 09 JUL 2026

NW-1, 11 JUN 2026 to 09 JUL 2026