

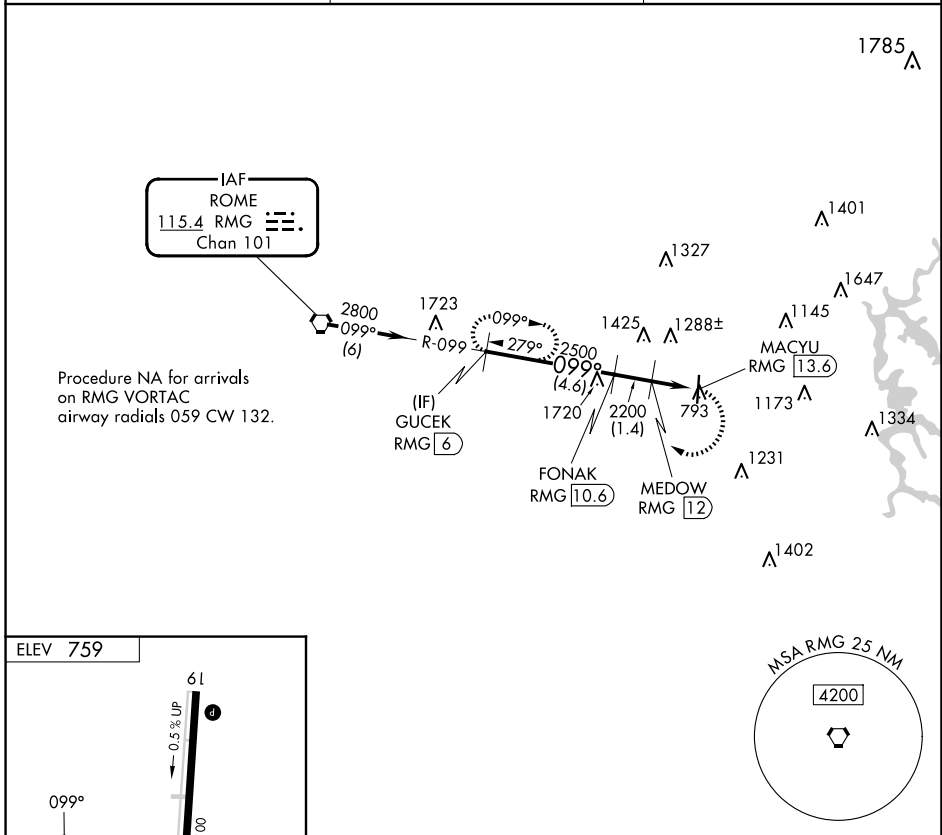
VORTAC RMG 115.4 Chan 101	APP CRS 099°	Rwy Idg TDZE Apt Elev N/A N/A 759
---	------------------------	---

VOR-A
CARTERSVILLE (VPC)

⚠ When local altimeter setting not received, use Rome altimeter setting and increase all MDA 80 feet; increase Cat A visibility ¼ SM. DME required.

MISSED APPROACH: Climbing right turn to 2800 on RMG R-099 to GUCEK/6 DME and hold.

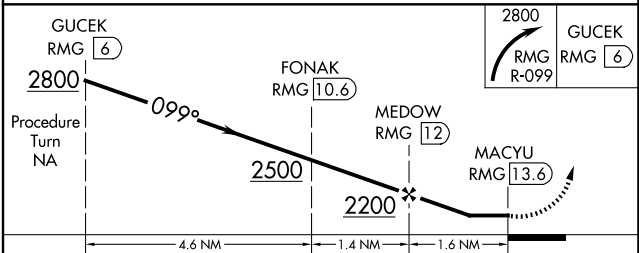
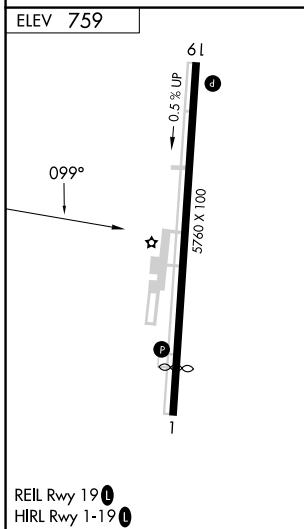
AWOS-3PT 120.525	ATLANTA APP CON 121.0 268.7	UNICOM 122.7 (CTAF) 0
----------------------------	---------------------------------------	---------------------------------



Procedure NA for arrivals on RMG VORTAC airway radials 059 CW 132.

SE-4, 11 JUN 2026 to 09 JUL 2026

SE-4, 11 JUN 2026 to 09 JUL 2026



CATEGORY	A	B	C	D
CIRCLING	1560-1 801 (900-1)	1600-1¼ 841 (900-1¼)	1740-3 981 (1000-3)	2020-3 1261 (1300-3)