

PUNTA GORDA, FLORIDA

AL-6178 (FAA)

25275

LOC/DME I-PGD 109.75 Chan 34 (Y)	APP CRS 035°	Rwy Ldg TDZE Apt Elev	7193 24 26
--	------------------------	-----------------------------	---------------------------------------

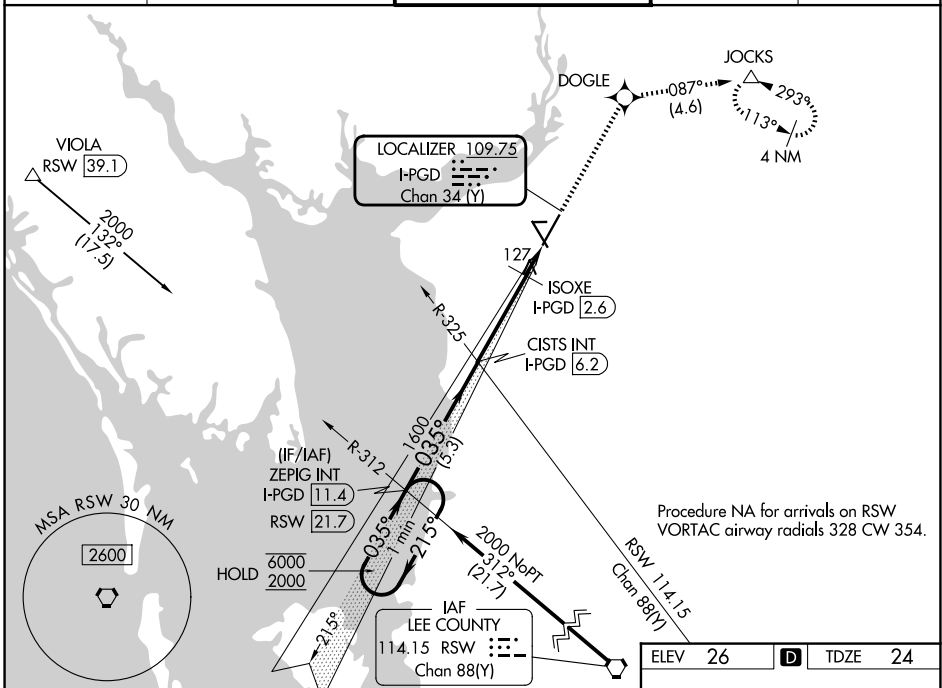
ILS or LOC RWY 4

PUNTA GORDA (PGD)

RNP APCH - GPS.

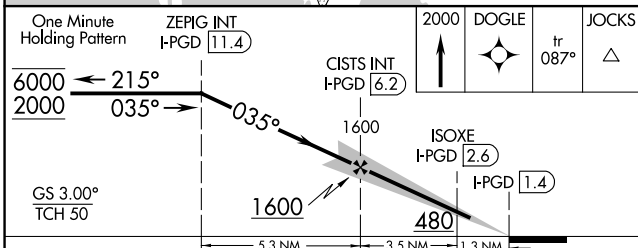
MISSED APPROACH: Climb to 2000 direct DOGLE and on track 087° to JOCKS and hold.

ATIS 135.675	FORT MYERS APP CON★ 127.05 306.2	PUNTA GORDA TOWER★ 121.0 (CTAF) 0	GND CON 119.55	UNICOM 122.975
------------------------	--	--	--------------------------	--------------------------

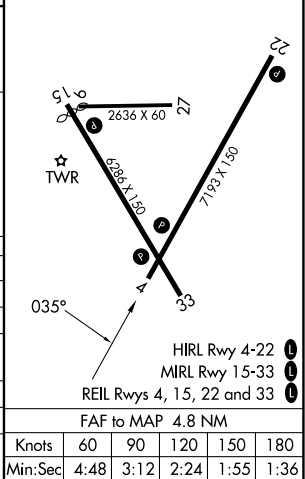


Procedure NA for arrivals on RSW VORTAC airway radials 328 CW 354.

ELEV 26	D	TDZE 24
---------	----------	---------



CATEGORY	A	B	C	D
S-ILS 4		256-3/4	232 (300-3/4)	
S-LOC 4	480-1	456 (500-1)	480-1 3/8	456 (500-1 3/8)
CIRCLING	480-1	580-1	600-1 1/2	740-2 1/4
	454 (500-1)	554 (600-1)	574 (600-1 1/2)	714 (800-2 1/4)
ISOXE FIX MINIMUMS (DME REQUIRED)				
S-LOC 4	380-1 356 (400-1)			
CIRCLING	460-1	580-1	600-1 1/2	740-2 1/4
	434 (500-1)	554 (600-1)	574 (600-1 1/2)	714 (800-2 1/4)



HIRL Rwy 4-22	1
MIRL Rwy 15-33	1
REIL Rws 4, 15, 22 and 33	1
FAF to MAP 4.8 NM	
Knots	60 90 120 150 180
Min:Sec	4:48 3:12 2:24 1:55 1:36

PUNTA GORDA, FLORIDA
Amdt 1 05SEP24

26°55'N-81°59'W

PUNTA GORDA (PGD) ILS or LOC RWY 4

SE-3, 11 JUN 2026 to 09 JUL 2026

SE-3, 11 JUN 2026 to 09 JUL 2026