

WAAS CH 78120 W26A	APP CRS 262°	Rwy Ldg TDZE Apt Elev	4300 1123 1123
--	------------------------	-----------------------------	---

RNAV (GPS) RWY 26

RANDOLPH COUNTY (I22)

RNP APCH - GPS.

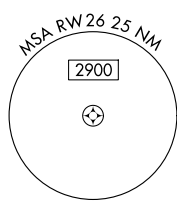
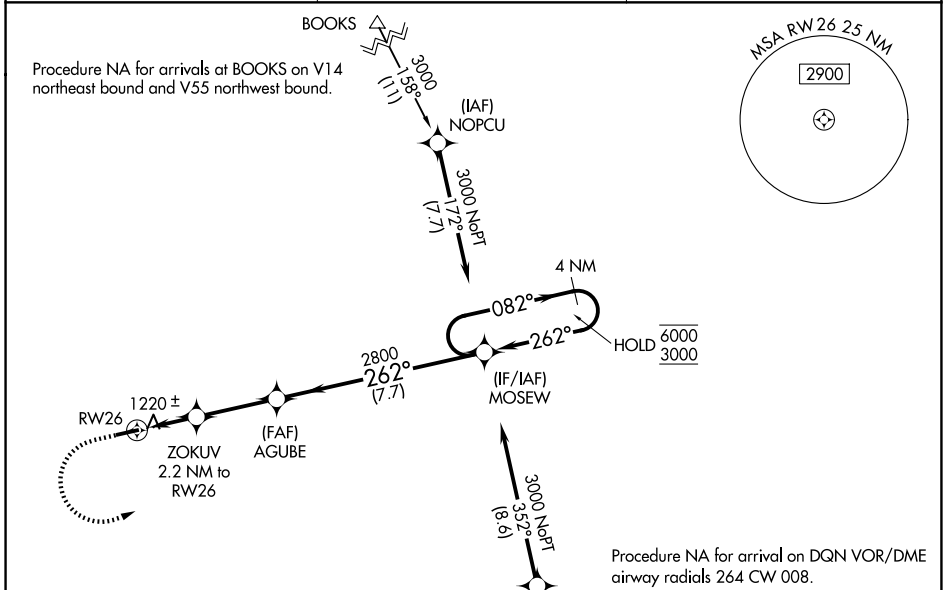
Baro-VNAV NA. Use VES altimeter setting, when not received, use MIE altimeter setting and increase LPV DA to 1514 feet and all visibilities $\frac{1}{8}$ SM; increase LNAV/VNAV DA to 1559 feet and all visibilities $\frac{1}{8}$ SM; increase all MDAs 20 feet and LNAV visibility Cat C $\frac{1}{8}$ SM.

MISSED APPROACH: Climb to 2500 then climbing left turn to 3000 direct MOSEW and hold.

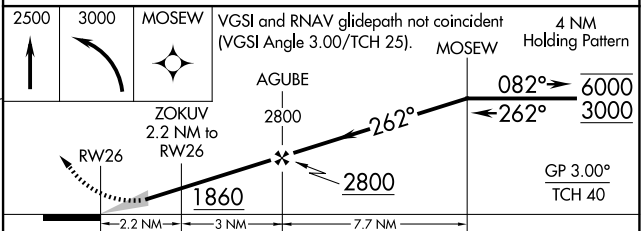
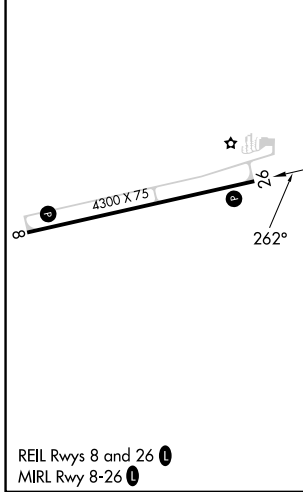
VES AWOS-3PT
125.9

COLUMBUS APP CON
134.45 352.05

UNICOM
123.0 (CTAF)



ELEV 1123	TDZE 1123
-----------	-----------



CATEGORY	A	B	C	D
LPV DA	1495-1 372 (400-1)			NA
LNAV/VNAV DA	1540-1 $\frac{1}{8}$ 417 (500-1 $\frac{1}{8}$)			NA
LNAV MDA	1540-1	417 (500-1)	1540-1 $\frac{1}{8}$ 417 (500-1 $\frac{1}{8}$)	NA
CIRCLING	1620-1	497 (500-1)	1820-2 697 (700-2)	NA

EC-2, 11 JUN 2026 to 09 JUL 2026

EC-2, 11 JUN 2026 to 09 JUL 2026