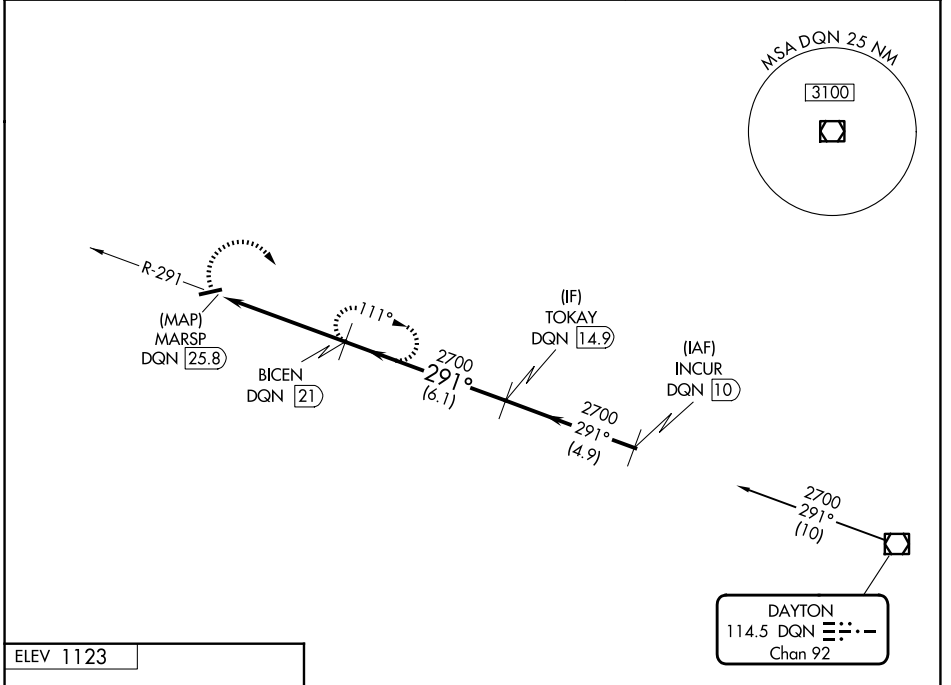


VOR/DME DQN 114.5 Chan 92	APP CRS 291°	Rwy Ldg TDZE Apt Elev 1123	N/A N/A 1123
---	------------------------	--------------------------------------	---

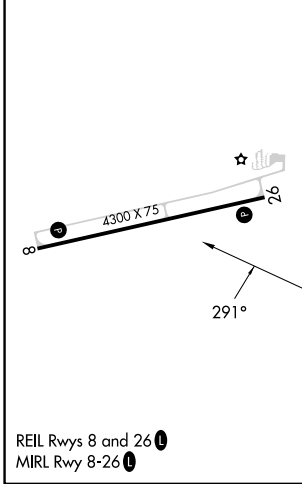
VOR-A
RANDOLPH COUNTY (I22)

DME required.	MISSED APPROACH: Climbing right turn to 2700 on DQN VOR/DME R-291 to BICEN/21 DME and hold.
▼ ▲ NA	

VES AWOS-3PT 125.9	COLUMBUS APP CON 134.45 352.05	UNICOM 123.0 (CTAF) 1
------------------------------	--	--



ELEV 1123



Procedure NA for arrival on DQN VOR/DME airway radials 234 CW 329.

	2700 DQN R-291	BICEN DQN 21	BICEN DQN 21	TOKAY DQN 14.9
	MARSP DQN 25.8	2700	2700	2700
	4.8 NM	6.1 NM		
CATEGORY	A	B	C	D
CIRCLING	1700-1	577 (600-1)	1820-2 697 (700-2)	NA

EC-2, 11 JUN 2026 to 09 JUL 2026

EC-2, 11 JUN 2026 to 09 JUL 2026