

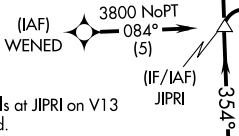
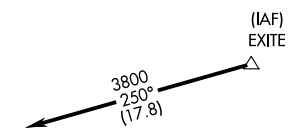
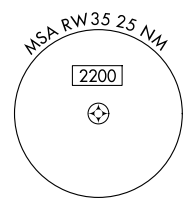
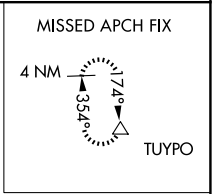
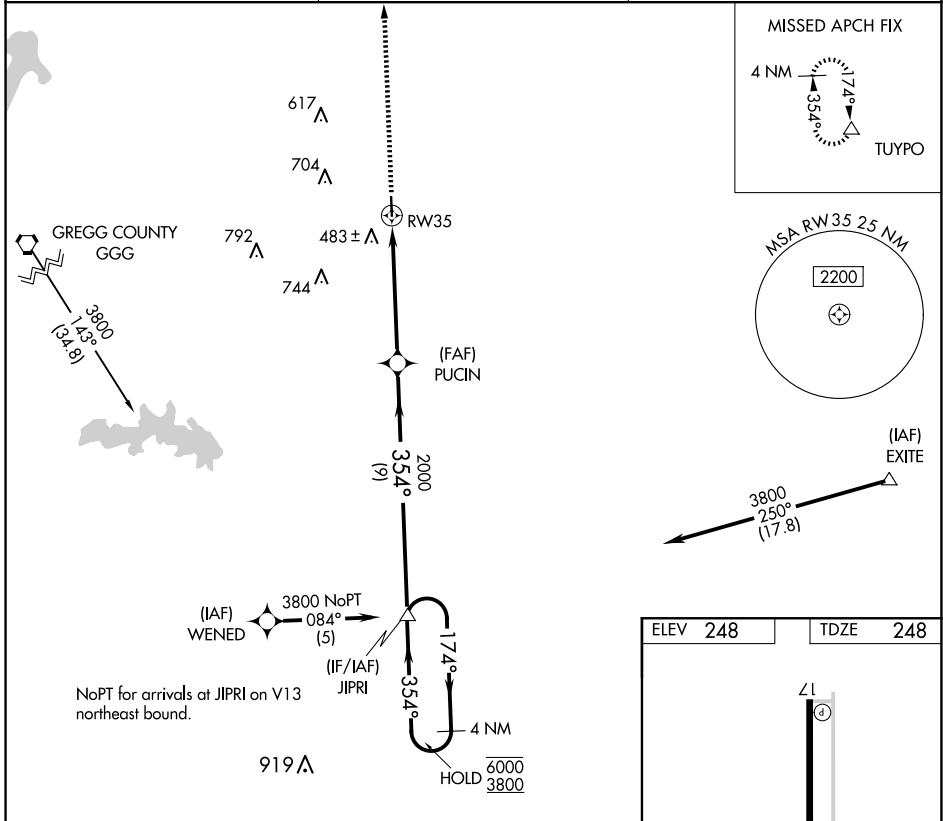
APP CRS	Rwy Ldg	4000
354°	TDZE	248
	Apt Elev	248

RNAV (GPS) RWY 35

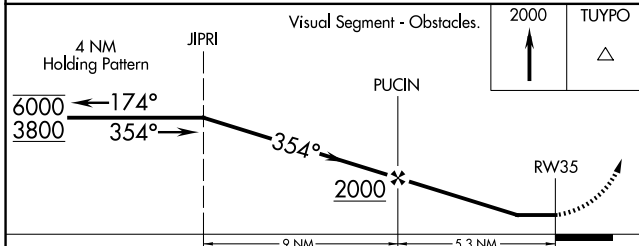
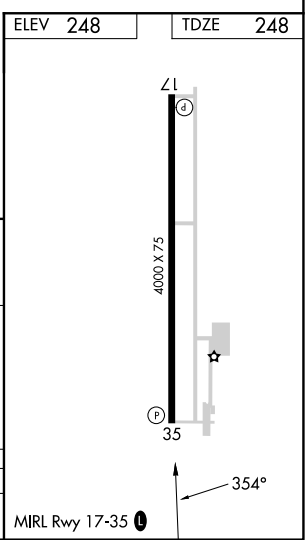
PANOLA COUNTY-SHARPE FLD (4F2)

RNP APCH-GPS.	<p>⚠ Rwy 35 helicopter visibility reduction below 3/4 SM NA. When local altimeter setting not received, use GGG altimeter setting.</p>	<p>MISSED APPROACH: Climb to 2000 direct TUYPO and hold.</p>

AWOS-3PT 121.125	SHREVEPORT APP CON * 119.9 335.55	UNICOM 122.8 (CTAF) 0
----------------------------	---	---------------------------------



NoPT for arrivals at JIPRI on V13 northeast bound.



CATEGORY	A	B	C	D
LNAV MDA	840-1	592 (600-1)	840-1 3/4 592 (600-1 3/4)	NA

MIRL Rwy 17-35 0

SC-2, 11 JUN 2026 to 09 JUL 2026

SC-2, 11 JUN 2026 to 09 JUL 2026