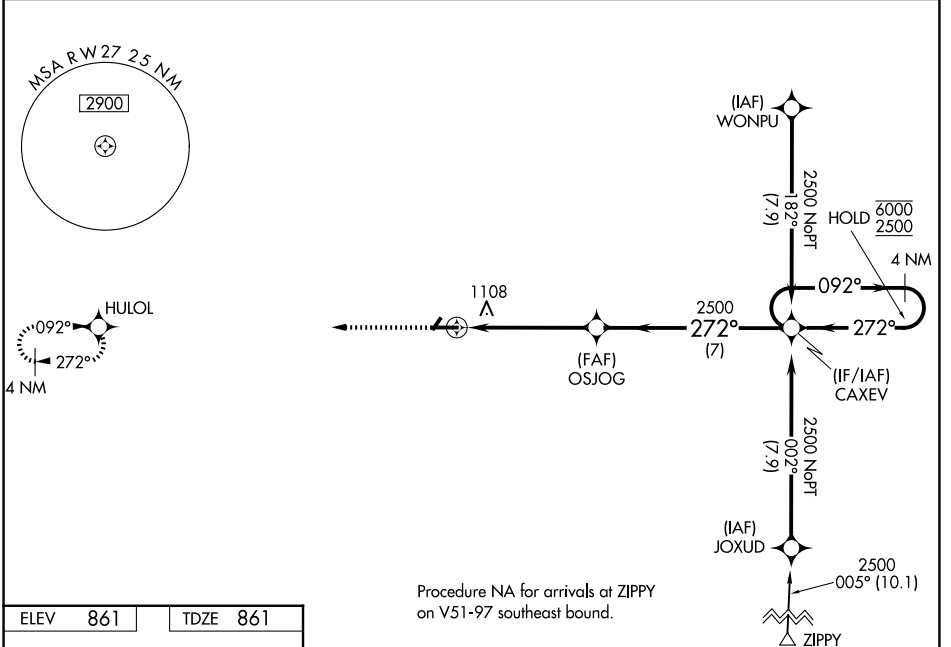


WAAS CH <b>65734</b> <b>W27A</b>	APP CRS <b>272°</b>	Rwy Ldg TDZE Apt Elev	<b>5000</b> <b>861</b> <b>861</b>
--	------------------------	-----------------------------	---

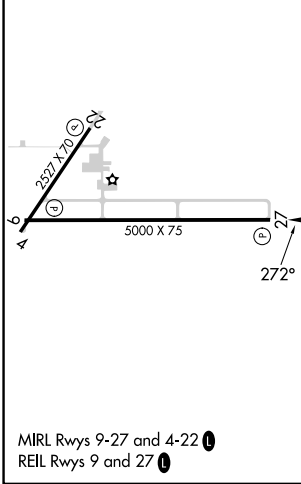
# RNAV (GPS) RWY 27

FRANKFORT CLINTON COUNTY RGNL (F'KR)

RNP APCH - GPS.		MISSED APPROACH: Climb to 2500 direct HULOL and hold.
⚠ Circling Rwy 4, 22 NA at night. For uncompensated Baro-VNAV systems, LNAV/VNAV NA below -16°C or above 54°C.		
AWOS-3 <b>124.325</b>	GRISSOM APP CON ★ <b>123.85 291.675</b>	UNICOM <b>123.0 (CTAF) 0</b>



ELEV <b>861</b>	TDZE <b>861</b>
-----------------	-----------------



2500	HULOL	VGSi and RNAV glidepath not coincident (VGSi Angle 3.00/TCH 25).	
OSJOG	CAXEV	4 NM Holding Pattern	
1.7 NM to RW27	2500	272°	092°
RW27	2500	272°	6000
1.7	3.4 NM	7 NM	2500
GP 3.00°	TCH 40		

CATEGORY	A	B	C	D
LPV DA	1111-3/4		250 (300-3/4)	
LNAV/VNAV DA	1476-1 3/4		615 (700-1 3/4)	
LNAV MDA	1420-1	559 (600-1)	1420-1 1/2	559 (600-1 1/2)
CIRCLING	1460-1	599 (600-1)	1520-1 3/4 659 (700-1 3/4)	1520-2 659 (700-2)

EC-2, 11 JUN 2026 to 09 JUL 2026

EC-2, 11 JUN 2026 to 09 JUL 2026