

| | | | |
|--|------------------------|-----------------------------|---|
| WAAS CH 86231 W16A | APP CRS 156° | Rwy Ldg TDZE Apt Elev | 4435 1459 1478 |
|--|------------------------|-----------------------------|---|

RNAV (GPS) RWY 16

TAYLOR COUNTY (MDZ)

RNP APCH.

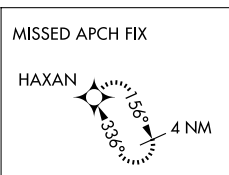
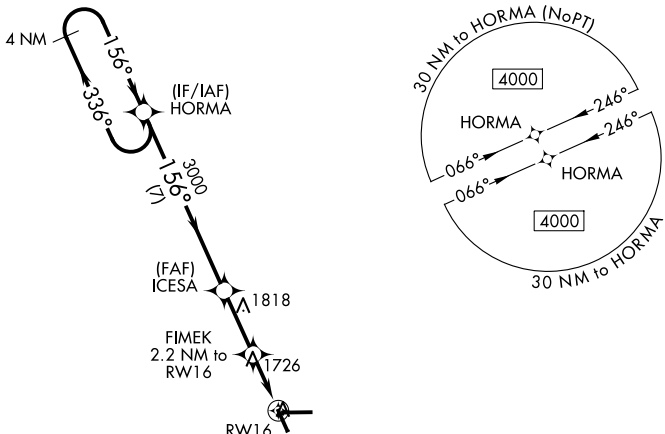
⚠ When local altimeter setting not received, use Merrill altimeter setting and increase all MDA 100 feet and increase all Cat C/D visibility $\frac{1}{4}$ mile. Rwy 16 helicopter visibility reduction below $\frac{3}{4}$ SM NA. VDP NA when using Merrill altimeter setting.

MISSED APPROACH:
Climb to 4000 direct HAXAN and hold.

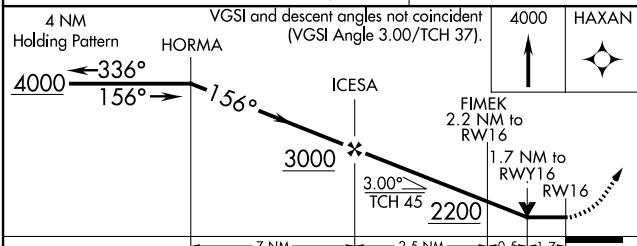
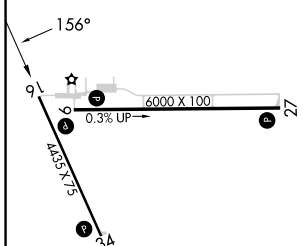
AWOS-3
119.025

MINNEAPOLIS CENTER
124.4 317.7

UNICOM
122.8 (CTAF)



| | |
|-----------|-----------|
| ELEV 1478 | TDZE 1459 |
|-----------|-----------|



| CATEGORY | A | B | C | D |
|----------|--------|-------------|--|--|
| LP MDA | 2040-1 | 581 (600-1) | 2040-1 $\frac{3}{4}$ | 581 (600-1 $\frac{3}{4}$) |
| LNAV MDA | 2060-1 | 601 (600-1) | 2060-1 $\frac{3}{4}$ | 601 (600-1 $\frac{3}{4}$) |
| CIRCLING | 2060-1 | 582 (600-1) | 2060-1 $\frac{3}{4}$ 582 (600-1 $\frac{3}{4}$) | 2180-2 $\frac{1}{4}$ 702 (800-2 $\frac{1}{4}$) |

REIL Rwys 9, 27 and 34
MIRL Rwys 9-27 and 16-34

EC-3, 11 JUN 2026 to 09 JUL 2026

EC-3, 11 JUN 2026 to 09 JUL 2026