

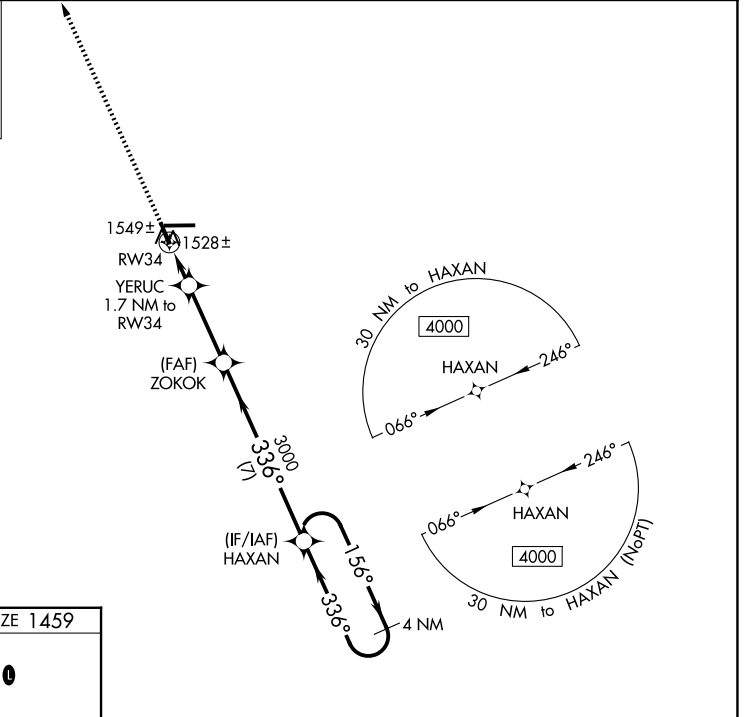
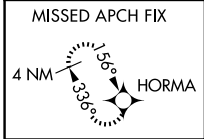
WAAS CH 73029 W34A	APP CRS 336°	Rwy Ldg TDZE Apt Elev	4435 1459 1478
--	------------------------	-----------------------------	---

RNAV (GPS) RWY 34

TAYLOR COUNTY (MDZ)

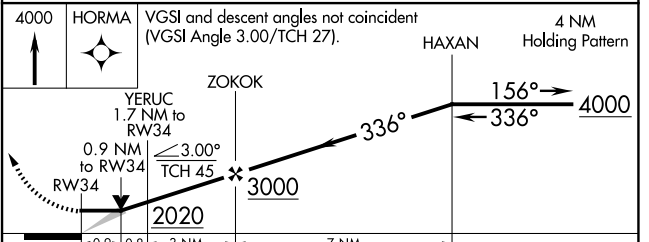
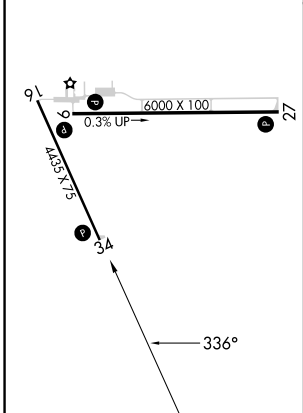
RNP APCH.	MISSED APPROACH: Climb to 4000 direct HORMA and hold.
<p>⚠ When local altimeter setting not received, use Merrill altimeter setting: increase all MDA 100 feet and all Cat C and D visibilities ¼ SM. VDP NA when using Merrill altimeter setting.</p>	

AWOS-3 119.025	MINNEAPOLIS CENTER 124.4 317.7	UNICOM 122.8 (CTAF) 0
--------------------------	--	---------------------------------



ELEV 1478	TDZE 1459
-----------	-----------

REIL Rwy 9, 27 and 34 0
MIRL Rwy 9-27 and 16-34 0



CATEGORY	A	B	C	D
LP MDA	1780-1 321 (400-1)			
LNAV MDA	1800-1 341 (400-1)			
CIRCLING	1940-1 462 (500-1)	2040-1 562 (600-1)	2040-1½ 562 (600-1½)	2180-2¼ 702 (800-2¼)

EC-3, 11 JUN 2026 to 09 JUL 2026

EC-3, 11 JUN 2026 to 09 JUL 2026