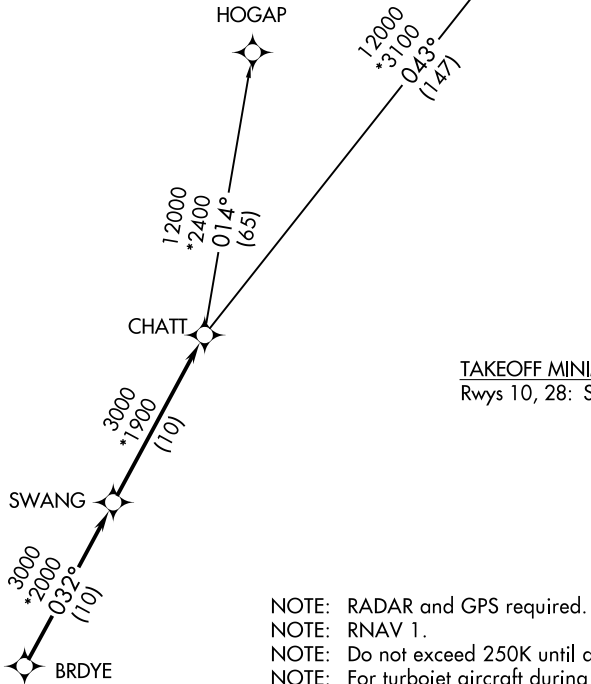


CHATT SIX DEPARTURE (RNAV)

AUGUSTA DEP CON ★
124.45 270.3
CTAF
122.8
AWOS-3
120.625

GREENSBORO
GSO

**TOP ALTITUDE:
ASSIGNED BY ATC**



TAKEOFF MINIMUMS:
Rwys 10, 28: Standard.

- NOTE: RADAR and GPS required.
- NOTE: RNAV 1.
- NOTE: Do not exceed 250K until advised by ATC.
- NOTE: For turbojet aircraft during Masters golf tournament week.

NOTE: Chart not to scale.



DEPARTURE ROUTE DESCRIPTION

TAKEOFF RUNWAY 10, 28: Climb on assigned heading for RADAR vectors to BRDYE, then on depicted route to CHATT, thence. . . .

. . . .maintain altitude assigned by ATC. Expect clearance to filed altitude/flight level within 10 minutes after departure.

GREENSBORO TRANSITION (CHATT6.GSO)
HOGAP TRANSITION (CHATT6.HOGAP)

SE-4, 11 JUN 2026 to 09 JUL 2026

SE-4, 11 JUN 2026 to 09 JUL 2026