

| | | | |
|--|------------------------|-----------------------------|---|
| WAAS CH 56521 W10A | APP CRS 097° | Rwy Idg TDZE Apt Elev | 5215 467 501 |
|--|------------------------|-----------------------------|---|

RNAV (GPS) RWY 10

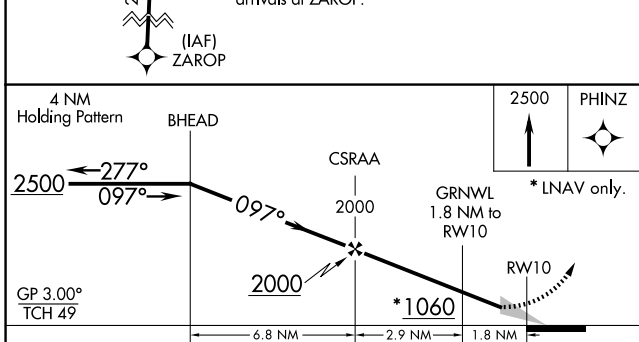
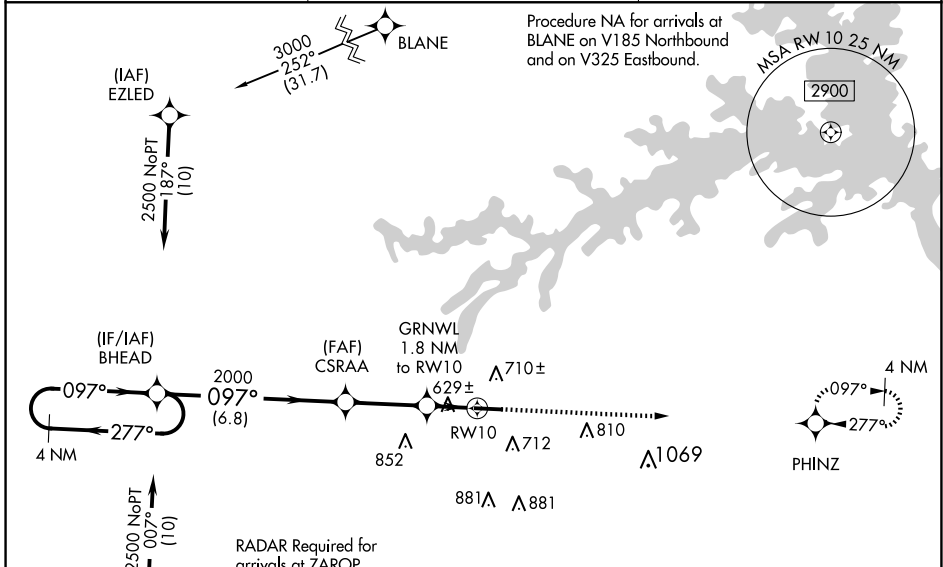
THOMSON/McDUFFIE COUNTY (HQU)

RNP APCH.

Baro-VNAV NA when using Daniel Field altimeter setting. For uncompensated Baro-VNAV systems, LNAV/VNAV NA below -15°C (5°F) or above 41°C (105°F). When local altimeter setting not received, use Daniel Field altimeter setting: increase LPV DA to 917 feet and visibility ½ SM, increase LNAV/VNAV DA to 1028 feet; increase all MDAs 80 feet, and visibility LNAV Cats C/D ¼ SM, and Circling Cat C ¼ SM, and Circling Cat D ½ SM.

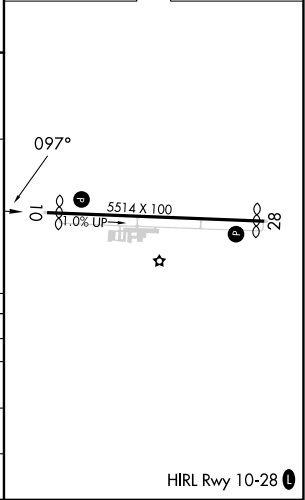
MISSED APPROACH:
Climb to 2500 direct PHINZ and hold.

| | | |
|--------------------------|--|---------------------------------|
| AWOS-3 120.625 | AUGUSTA APP CON ★ 124.45 270.3 | UNICOM 122.8 (CTAF) 0 |
|--------------------------|--|---------------------------------|



| | |
|----------|-------------------|
| ELEV 501 | D TDZE 467 |
|----------|-------------------|

| CATEGORY | A | B | C | D |
|-------------------|-----------------------|-----------------------|-------------------------|-------------------------|
| LPV DA | | 850-1¼ | 383 (400-1¼) | |
| LNAV/VNAV DA | | 961-1½ | 494 (500-1½) | |
| LNAV MDA | 880-1 | 413 (400-1) | 880-1¼ | 413 (400-1¼) |
| C CIRCLING | 1060-1 559 (600-1) | 1080-1 579 (600-1) | 1160-1¾ 659 (700-1¾) | 1240-2¼ 739 (800-2¼) |



SE-4, 11 JUN 2026 to 09 JUL 2026

SE-4, 11 JUN 2026 to 09 JUL 2026