

RNAV (GPS) RWY 23

BERKELEY COUNTY (MKS)

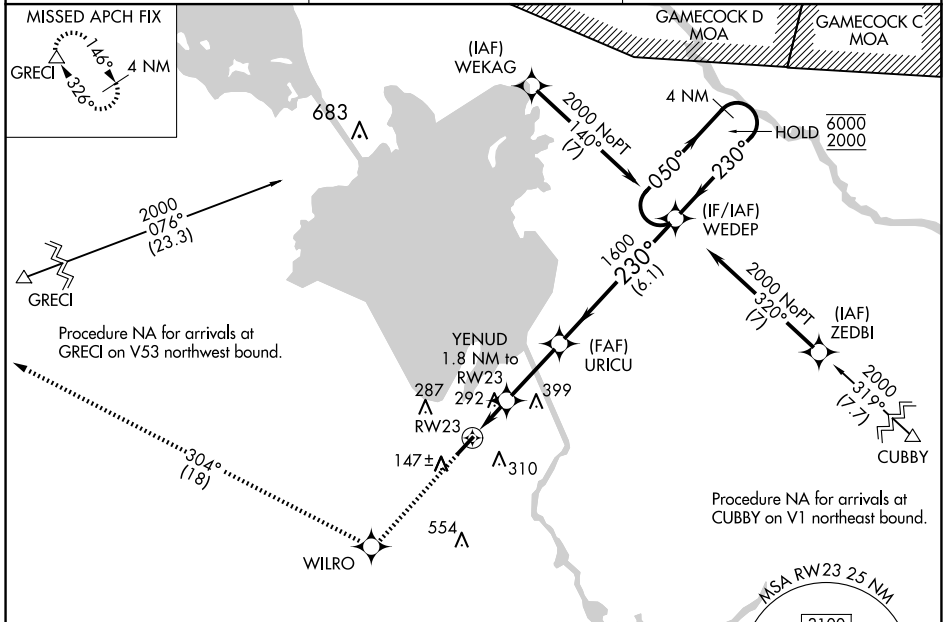
APP CRS 230°	Rwy Idg TDZE Apt Elev	5001 74 74
------------------------	-----------------------------	---------------------------------------

RNP APCH - GPS.

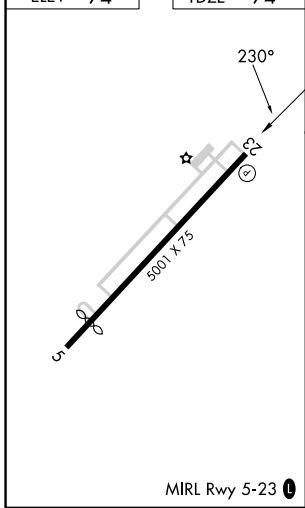
Procedure NA at night. Rwy 23 helicopter visibility reduction below 1 SM NA.
 When local altimeter setting not received, use Charleston AFB/Intl altimeter setting:
 increase all MDAs 60 feet and increase LNAV visibility Cat C and D and Circling
 visibility Cat C and D ¼ SM.

MISSED APPROACH: Climb to 2000 direct WILRO and on track 304° to GRECI and hold.

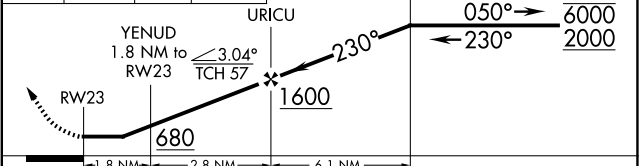
AWOS-3 119.175	CHARLESTON APP CON 121.275 379.925	UNICOM 123.05 (CTAF) 0
--------------------------	--	---



ELEV 74	TDZE 74
---------	---------



2000	WILRO	304° tr	GRECI	VGSI and descent angles not coincident (VGSI Angle 3.00/TCH 44).	4 NM Holding Pattern
------	-------	---------	-------	--	----------------------



CATEGORY	A	B	C	D
LNAV MDA	560-1	486 (500-1)	560-1⅜	486 (500-1⅜)
CIRCLING	580-1 506 (600-1)	620-1 546 (600-1)	700-1¾ 626 (700-1¾)	860-2½ 786 (800-2½)

SE-2, 11 JUN 2026 to 09 JUL 2026

SE-2, 11 JUN 2026 to 09 JUL 2026