

| | | | |
|---|------------------------|---|--|
| VORTAC APE 116.7 Chan 114 | APP CRS 194° | Rwy Ldg TDZE Apt Elev 868 | N/A N/A 868 |
|---|------------------------|---|--|

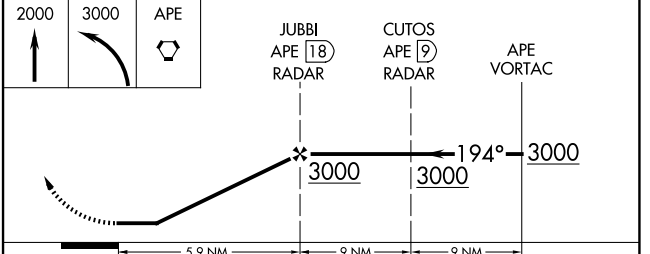
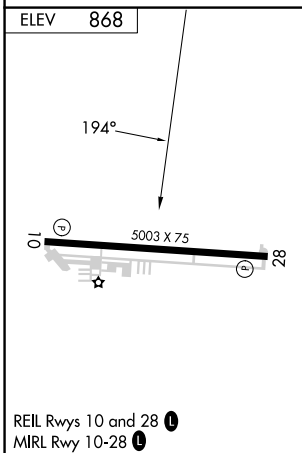
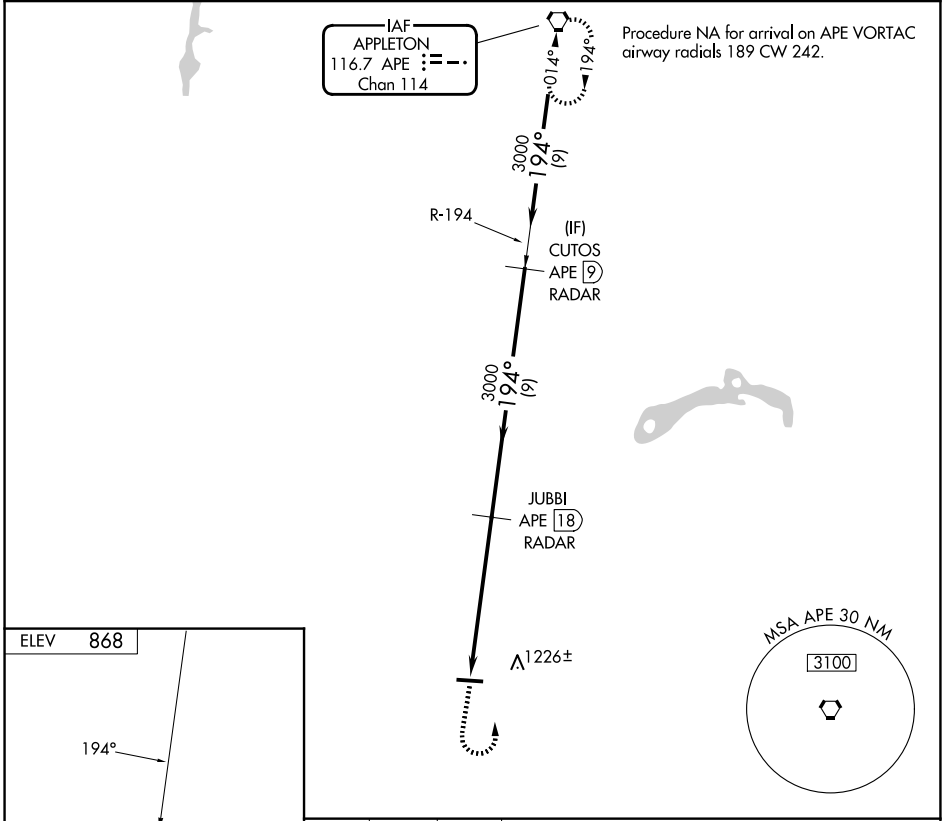
VOR-A
FAIRFIELD COUNTY (L.H.Q)

DME or RADAR required.

▼ When local altimeter setting not received, use Rickenbacker Intl altimeter setting and increase all MDAs 60 feet and visibility Cat C ¼ SM. Circling Rwy 28 NA at night. Rwy 28 helicopter visibility reduction below 1 SM NA.

▲ MISSED APPROACH: Climb to 2000 then climbing left turn to 3000 direct APE VORTAC and hold.

| | | | |
|------------------------|--|---------------------------|--|
| ASOS 118.375 | COLUMBUS APP CON 134.0 279.6 | CLNC DEL 121.65 | UNICOM 122.725 (CTAF) 📞 |
|------------------------|--|---------------------------|--|



| | | | | |
|-------------------|-----------------------|-----------------------|-------------------------|----|
| FAF to MAP 5.9 NM | | | | |
| CATEGORY | A | B | C | D |
| CIRCLING | 1500-1 632 (700-1) | 1540-1 672 (700-1) | 1620-2¼ 752 (800-2¼) | NA |

| | | | | | |
|---------|------|------|------|------|------|
| Knots | 60 | 90 | 120 | 150 | 180 |
| Min:Sec | 5:54 | 3:56 | 2:57 | 2:22 | 1:58 |

EC-2, 11 JUN 2026 to 09 JUL 2026

EC-2, 11 JUN 2026 to 09 JUL 2026