

WAAS CH 49131 W17A	APP CRS 166°	Rwy Ldg 4010 TDZE 1522 Apt Elev 1523
--	------------------------	---

RNAV (GPS) RWY 17

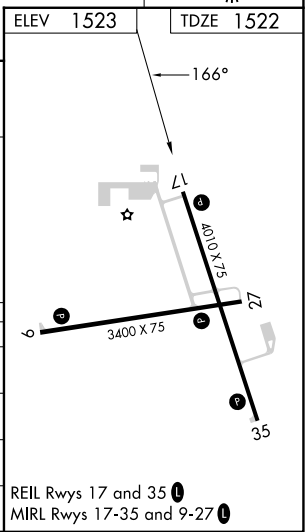
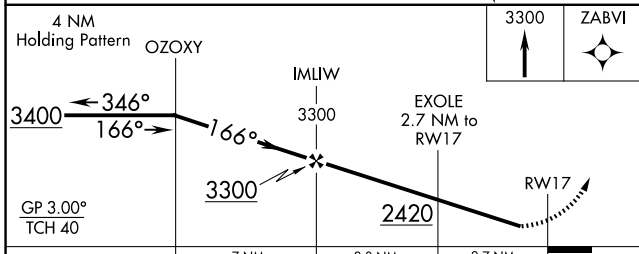
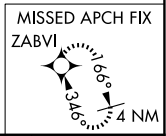
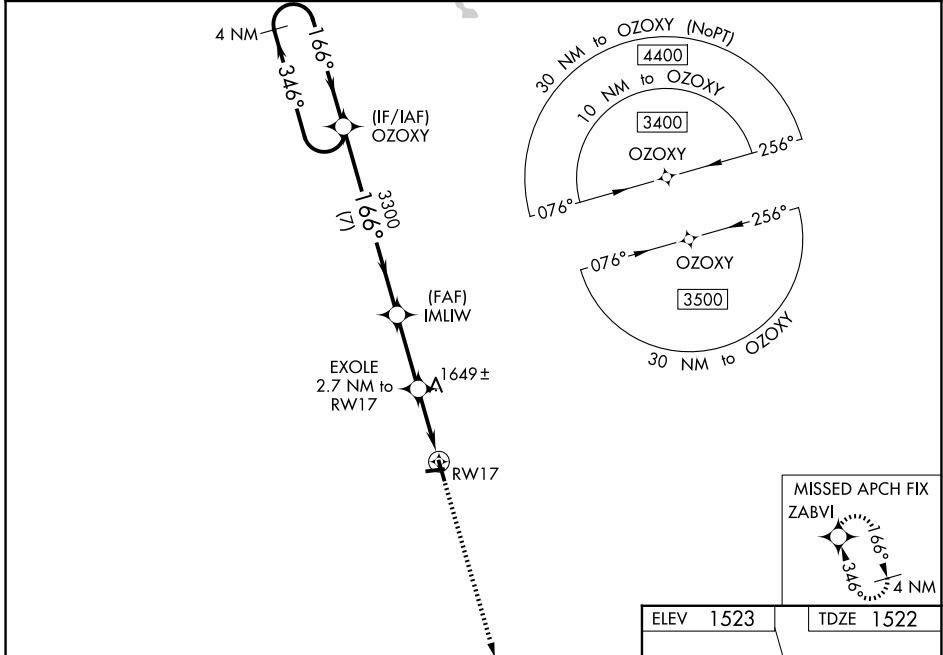
LANGLADE COUNTY (AIG)

RNP APCH - GPS.

⚠ Baro-VNAV NA when using AUV altimeter setting. For uncompensated Baro-VNAV systems, LNAV/VNAV NA below -18°C or above 54°C. Procedure NA at night. Helicopter visibility reduction below 1 SM NA. When local altimeter setting not received, use AUV altimeter setting and increase LPV DA to 1877 feet and all visibilities ¼ SM. Increase LNAV/VNAV DA to 2029 feet and all visibilities ¼ SM. Increase all MDAs 120 feet and LNAV visibility Cat C/D ¼ SM, and Circling visibility Cat C/D ½ SM.

MISSED APPROACH:
Climb to 3300 direct ZABVI and hold.

AWOS-3 119.075	MINNEAPOLIS CENTER 124.4 317.7	UNICOM 122.8 (CTAF)
--------------------------	--	-------------------------------



CATEGORY	A	B	C	D
LPV DA	1772-1		250 (300-1)	
LNAV/VNAV DA	1924-1 ³ / ₈		402 (400-1 ³ / ₈)	
LNAV MDA	1920-1	398 (400-1)	1920-1 ¹ / ₈	398 (400-1 ¹ / ₈)
CIRCLING	2120-1	597 (600-1)	2260-2 737 (800-2)	2260-2 ¹ / ₄ 737 (800-2 ¹ / ₄)

EC-3, 11 JUN 2026 to 09 JUL 2026

EC-3, 11 JUN 2026 to 09 JUL 2026