

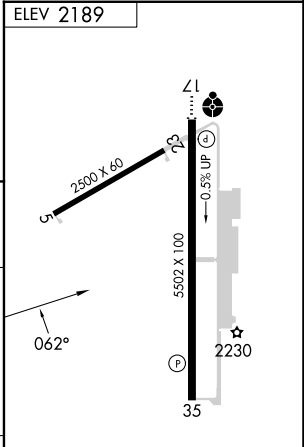
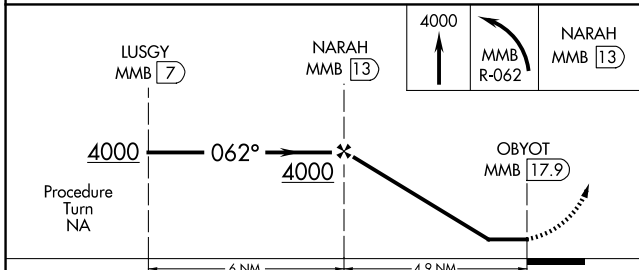
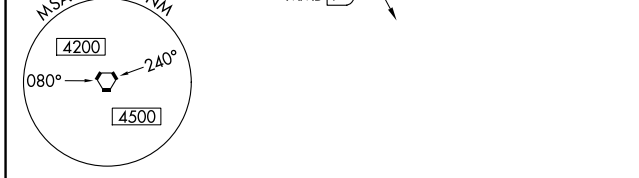
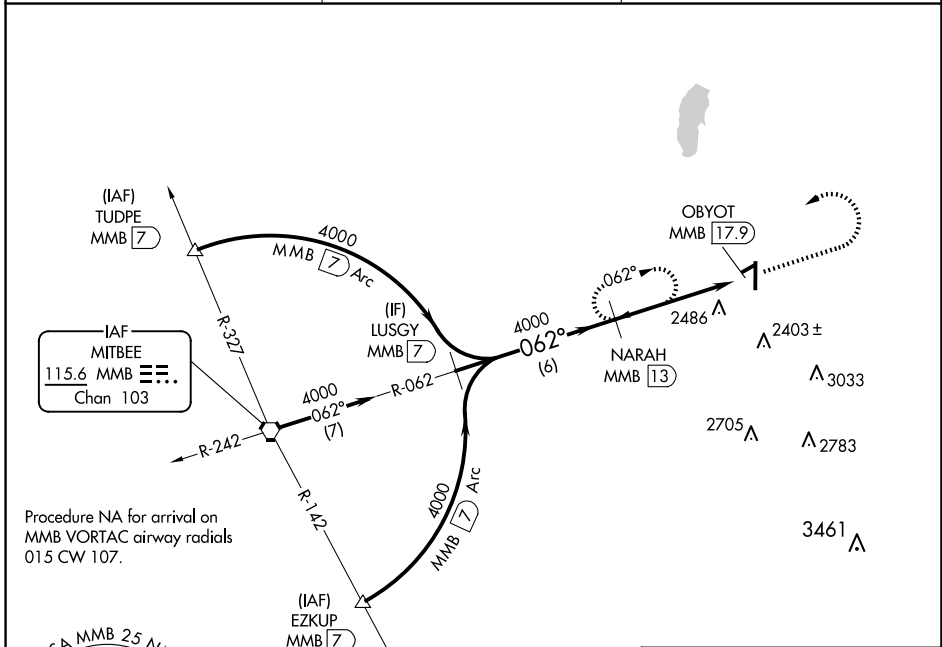
VORTAC MMB <b>115.6</b> Chan <b>103</b>	APP CRS <b>062°</b>	Rwy Idg TDZE Apt Elev <b>N/A</b> <b>N/A</b> <b>2189</b>
---	------------------------	--

**VOR/DME-A**  
WEST WOODWARD (WWR)

**⚠** When local altimeter setting not received, use Gage altimeter setting and increase all MDA 40 feet. Circling NA to Rwy 5 and 23.

MISSED APPROACH: Climb to 4000, then left turn via MMB VORTAC R-062 to NARAH/MMB VORTAC 13 DME and hold.

AWOS-3 <b>118.425</b>	KANSAS CITY CENTER <b>126.95 379.2</b>	UNICOM <b>122.8 (CTAF) 0</b>
--------------------------	---	---------------------------------



CATEGORY	A	B	C	D
CIRCLING	2820-1 631 (700-1)	2840-1 651 (700-1)	2940-2¼ 751 (800-2¼)	2960-2½ 771 (800-2½)

SC-1, 11 JUN 2026 to 09 JUL 2026

SC-1, 11 JUN 2026 to 09 JUL 2026