

APP CRS **087°**  
 Rwy Idg **3002**  
 TDZE **146**  
 Apt Elev **146**

# RNAV (GPS) RWY 9

DAVID G JOYCE (ØR5)

RNP APCH - GPS.

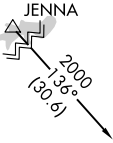
**NA** Procedure NA at night. Rwy 9 helicopter visibility reduction below 1 SM NA. Use Alexandria Intl altimeter setting, when not received use Esler Rgnl altimeter setting.

MISSED APPROACH: Climb to 2000 direct XOVVOY and hold.

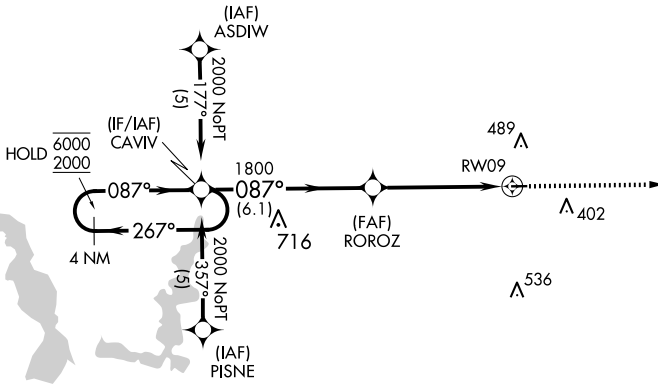
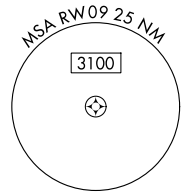
AEX ASOS  
**123.975**

POLK APP CON  
**125.4 302.2**

UNICOM  
**122.7 (CTAF) 0**

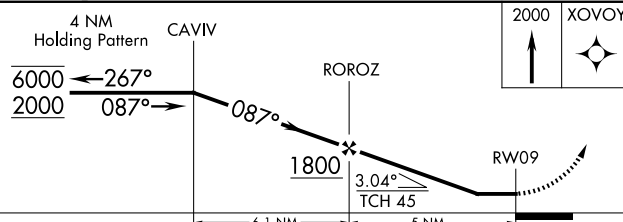


Procedure NA for arrivals at JENNA on V94 westbound.



Procedure NA for arrivals at NUBOY on V114-566 southeast bound.

ELEV **146** TDZE **146**



ELEV <b>146</b>	TDZE <b>146</b>
2000	XOVVOY
3002 X 100	27
0.9% UP	
087° to RWY 09	

MIRL Rwy 9-27 **0**  
 REIL Rwy 9 and 27 **0**

CATEGORY	A	B	C	D
LNAV MDA	780-1	634 (700-1)		NA
CIRCLING	780-1 634 (700-1)	900-1 754 (800-1)		NA

SC-4, 11 JUN 2026 to 09 JUL 2026

SC-4, 11 JUN 2026 to 09 JUL 2026