

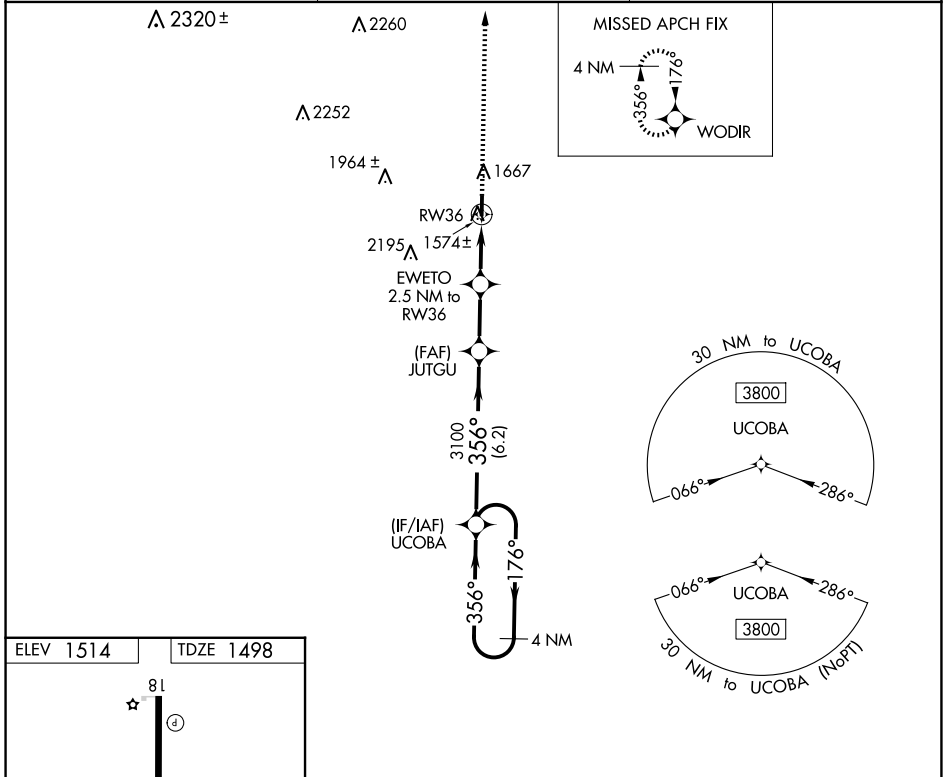
APP CRS 356°	Rwy Idg 3716
	TDZE 1498
	Apt Elev 1514

RNAV (GPS) RWY 36

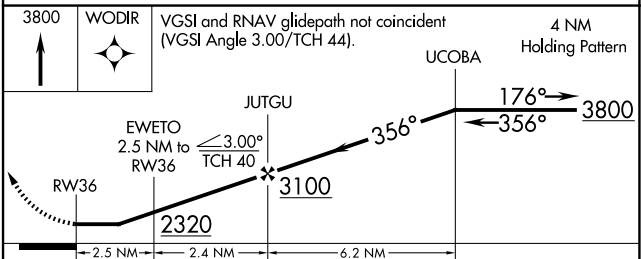
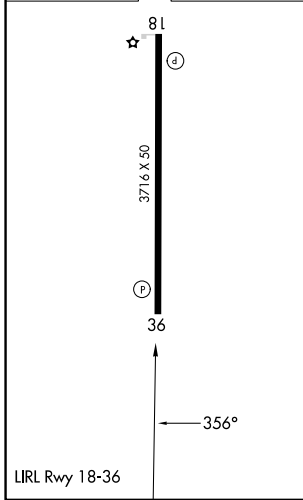
MASON COUNTY (T92)

RNP APCH - GPS.	MISSED APPROACH: Climb to 3800 direct WODIR and hold.
Rwy 36 helicopter visibility reduction below 1 SM NA. Procedure NA at night. Use Brady altimeter setting; when not received, use Llano altimeter setting and increase all MDAs 20 feet.	

BBD AWOS-3 118.375	HOUSTON CENTER 132.35 317.5	CTAF 122.9
------------------------------	---------------------------------------	----------------------



ELEV 1514	TDZE 1498
-----------	-----------



CATEGORY	A	B	C	D
LNAV MDA	1940-1	442 (500-1)	NA	
CIRCLING	2140-1	626 (700-1)	NA	

SC-3, 11 JUN 2026 to 09 JUL 2026

SC-3, 11 JUN 2026 to 09 JUL 2026