

WAAS CH 61024 W36A	APP CRS 358°	Rwy Idg TDZE Apt Elev	4202 218 218
--	------------------------	-----------------------------	---

RNAV (GPS) RWY 36

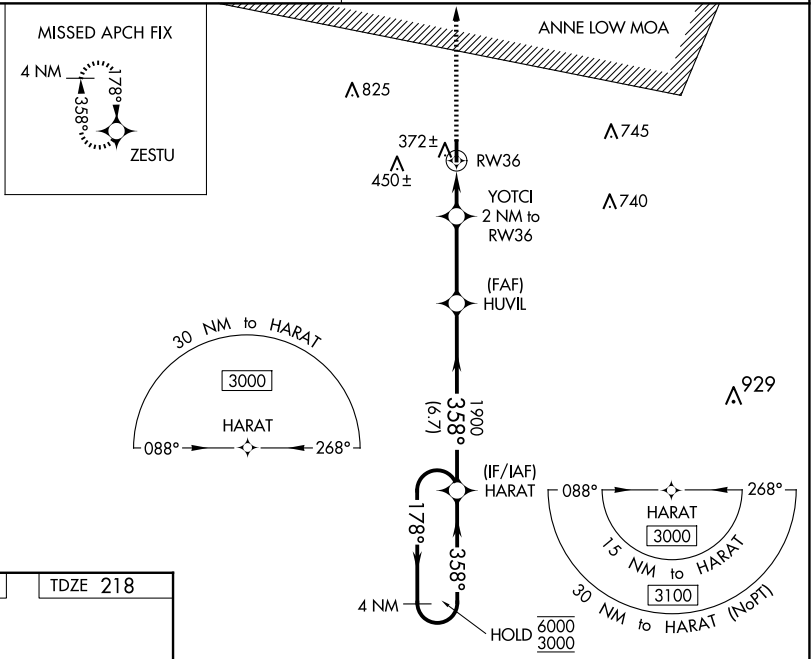
SPRINGHILL (SPH)

RNP APCH.

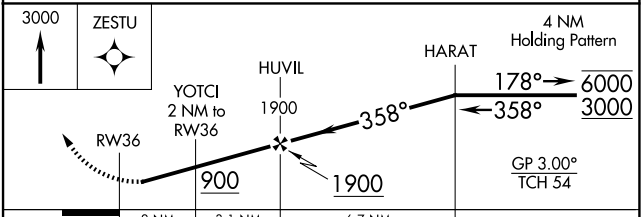
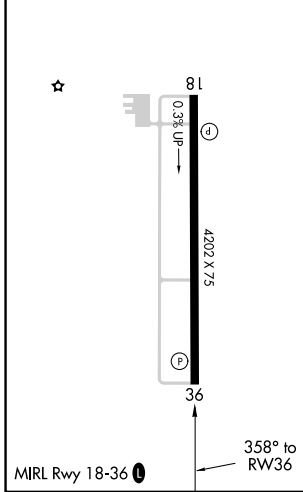
NA Rwy 36 helicopter visibility reduction below ¼ SM NA.
For uncompensated Baro-VNAV systems, procedure NA below -15°C or above 54°C.

MISSED APPROACH:
Climb to 3000 direct ZESTU and hold.

SHREVEPORT APP CON 123.75 360.725	UNICOM 122.8 (CTAF) 0
---	---------------------------------



ELEV 218	TDZE 218
----------	----------



CATEGORY	A	B	C	D
LPV DA	545-1	327 (400-1)		NA
LNAV/VNAV DA	638-1½	420 (500-1½)		NA
LNAV MDA	640-1	422 (500-1)	640-1¼ 422 (500-1¼)	NA
C CIRCLING	700-1	482 (500-1)	820-1¾ 602 (700-1¾)	NA

SC-4, 11 JUN 2026 to 09 JUL 2026

SC-4, 11 JUN 2026 to 09 JUL 2026