

WAAS CH <b>69212</b> <b>W25A</b>	APP CRS <b>252°</b>	Rwy Idg TDZE Apt Elev	<b>4703</b> <b>913</b> <b>913</b>
--	------------------------	-----------------------------	---

# RNAV (GPS) RWY 25

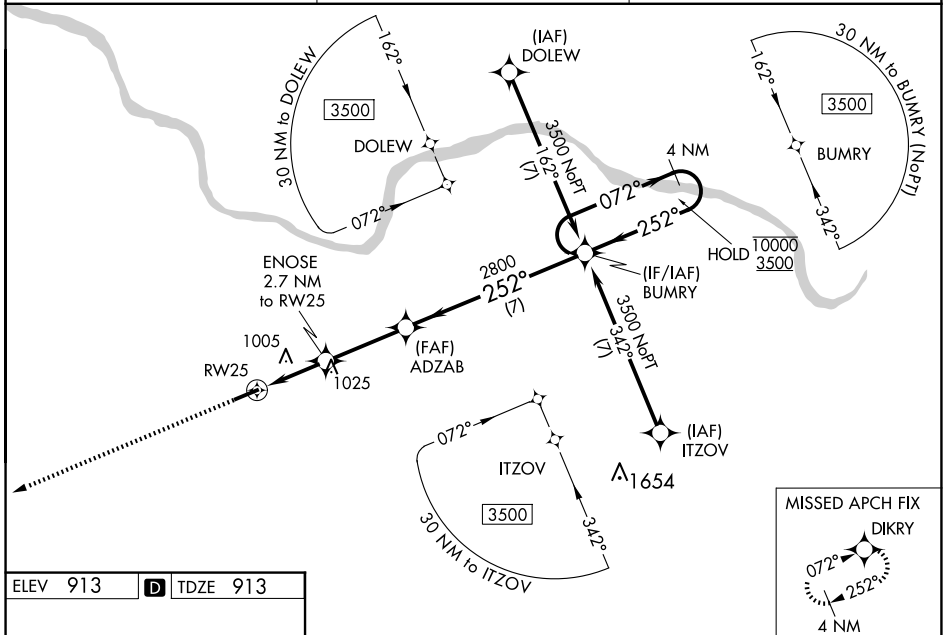
FLEMING-MASON (F'G'X)

RNP APCH - GPS.

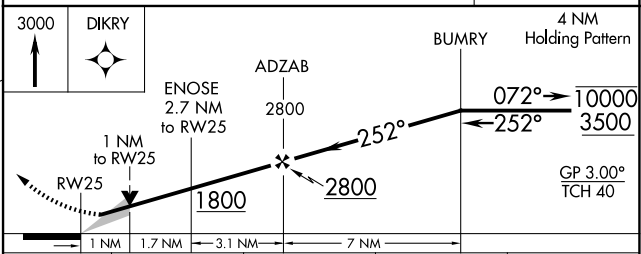
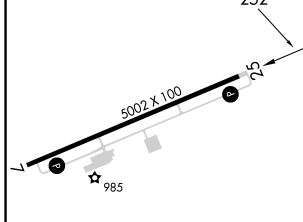
▼ Baro-VNAV and VDP NA when using Blue Grass altimeter setting. For uncompensated Baro-VNAV systems, LNAV/VNAV NA below -16°C or above 54°C. When local altimeter setting not received, use Lexington altimeter setting and increase LPV DA to 1240 feet and all visibilities ¼ SM; increase LNAV/VNAV DA to 1290 feet and all visibilities ¼ SM; increase all MDAs 140 feet and LNAV visibility Cat C/D ⅓ SM, and Circling visibility Cat C/D ½ SM.

MISSED APPROACH:  
Climb to 3000 direct  
DIKRY and hold.

AWOS-3 <b>118.125</b>	INDIANAPOLIS CENTER <b>124.225 360.725</b>	UNICOM <b>123.0(CTAF)</b>
--------------------------	---	------------------------------



ELEV 913	<b>D</b>	TDZE 913
----------	----------	----------



CATEGORY	A	B	C	D
LPV DA		1113-¾	200 (200-¾)	
LNAV/VNAV DA		1163-¾	250 (300-¾)	
LNAV MDA		1260-1	347 (400-1)	
CIRCLING	1320-1 407 (500-1)	1380-1 467 (500-1)	1520-1¾ 607 (700-1¾)	1520-2 607 (700-2)

SE-1, 11 JUN 2026 to 09 JUL 2026

SE-1, 11 JUN 2026 to 09 JUL 2026