

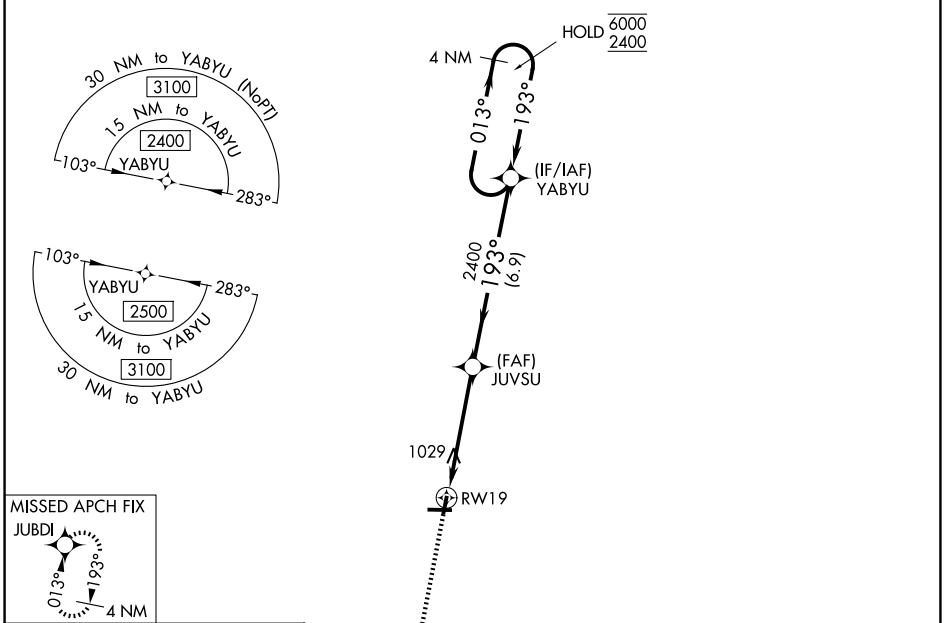
WAAS CH <b>97533</b> <b>W19A</b>	APP CRS <b>193°</b>	Rwy Ldg TDZE Apt Elev	<b>3200</b> <b>857</b> <b>858</b>
--	------------------------	-----------------------------	---

# RNAV (GPS) RWY 19

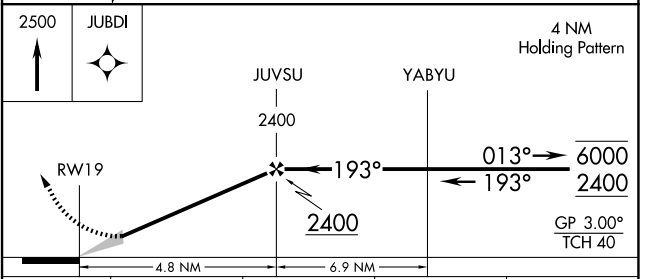
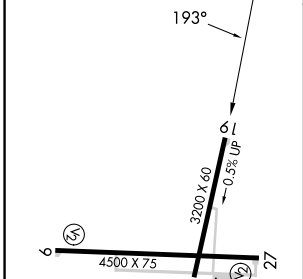
KEWANEE MUNI (EZI)

RNP APCH - GPS.	<p>Baro-VNAV NA. Use GBG altimeter setting; when not received, use MLI altimeter setting and increase LPV DA to 1212 feet; increase LNAV/VNAV DA to 1446 feet and all visibilities <math>\frac{1}{8}</math> SM.</p> <p>NA. Increase all MDAs 40 feet and LNAV visibility Cat C <math>\frac{1}{8}</math> SM, and Circling visibility Cat C <math>\frac{1}{4}</math> SM.</p>	MISSED APPROACH: Climb to 2500 direct JUBDI and hold.
-----------------	--	--

GBG AWOS-3 <b>118.975</b>	QUAD CITY APP CON* <b>133.275 257.8</b>	UNICOM <b>122.8 (CTAF) 0</b>
------------------------------	--	---------------------------------



ELEV <b>858</b>	TDZE <b>857</b>
-----------------	-----------------



CATEGORY	A	B	C	D
LPV DA	1182-1 325 (400-1)			NA
LNAV/VNAV DA	1400-1 $\frac{5}{8}$ 543 (600-1 $\frac{5}{8}$ )			NA
LNAV MDA	1400-1	543 (600-1)	1400-1 $\frac{5}{8}$ 543 (600-1 $\frac{5}{8}$ )	NA
CIRCLING	1400-1 542 (600-1)	1520-1 662 (700-1)	1520-1 $\frac{3}{4}$ 662 (700-1 $\frac{3}{4}$ )	NA

EC-3, 11 JUN 2026 to 09 JUL 2026

EC-3, 11 JUN 2026 to 09 JUL 2026