

WAAS CH 56433 W27A	APP CRS 273°	Rwy Ldg TDZE Apt Elev	4500 858 858
--	------------------------	-----------------------------	---

RNAV (GPS) RWY 27

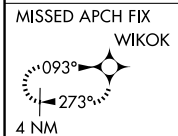
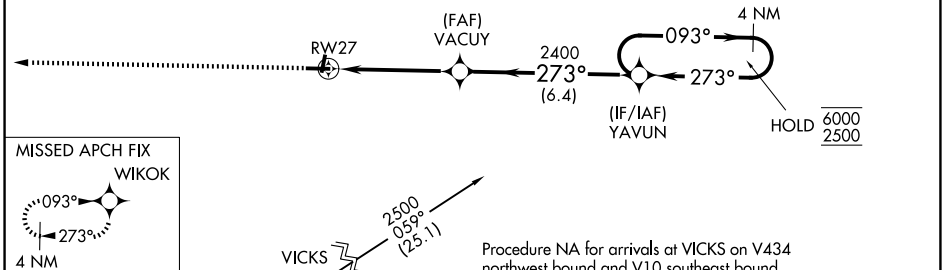
KEWANEE MUNI (EZI)

RNP APCH - GPS.		MISSED APPROACH: Climb to 2500 direct WIKOK and hold.
<p>Baro-VNAV NA. Use GBG altimeter setting; when not received use MLI altimeter setting and increase LPV DA to 1213 feet, LNAV/VNAV DA to 1242 feet and all visibilities 1/8 SM; increase all MDAs 40 feet and LNAV visibility Cat C 1/8 SM, and Circling visibility Cat C 1/4 SM.</p>		

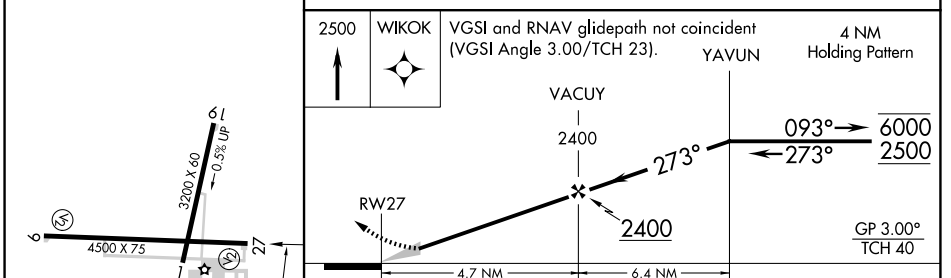
GBG AWOS-3 118.975	QUAD CITY APP CON★ 133.275 257.8	UNICOM 122.8 (CTAF) 0
------------------------------	--	---------------------------------



Procedure NA for arrivals at WYNET on V8 and V38 eastbound.



ELEV 858	TDZE 858
----------	----------



CATEGORY	A	B	C	D
LPV DA	1183-1 325 (400-1)			NA
LNAV/VNAV DA	1212-1 354 (400-1)			NA
LNAV MDA	1380-1	522 (600-1)	1380-1½ 522 (600-1½)	NA
CIRCLING	1380-1 522 (600-1)	1520-1 662 (700-1)	1520-1¾ 662 (700-1¾)	NA

MIRL Rwy 1-19 and 9-27 0

EC-3, 11 JUN 2026 to 09 JUL 2026

EC-3, 11 JUN 2026 to 09 JUL 2026