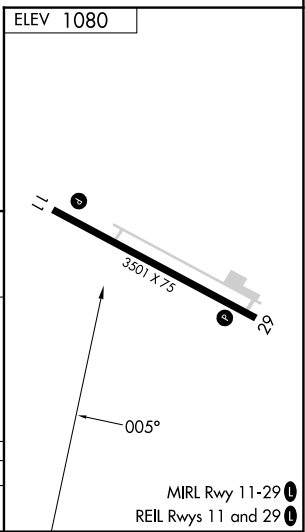
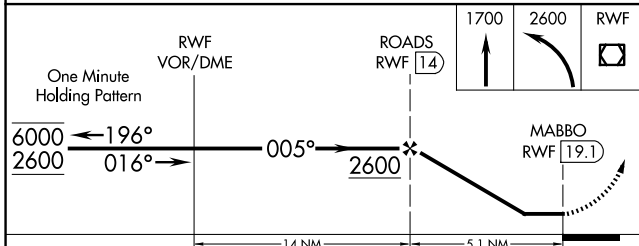
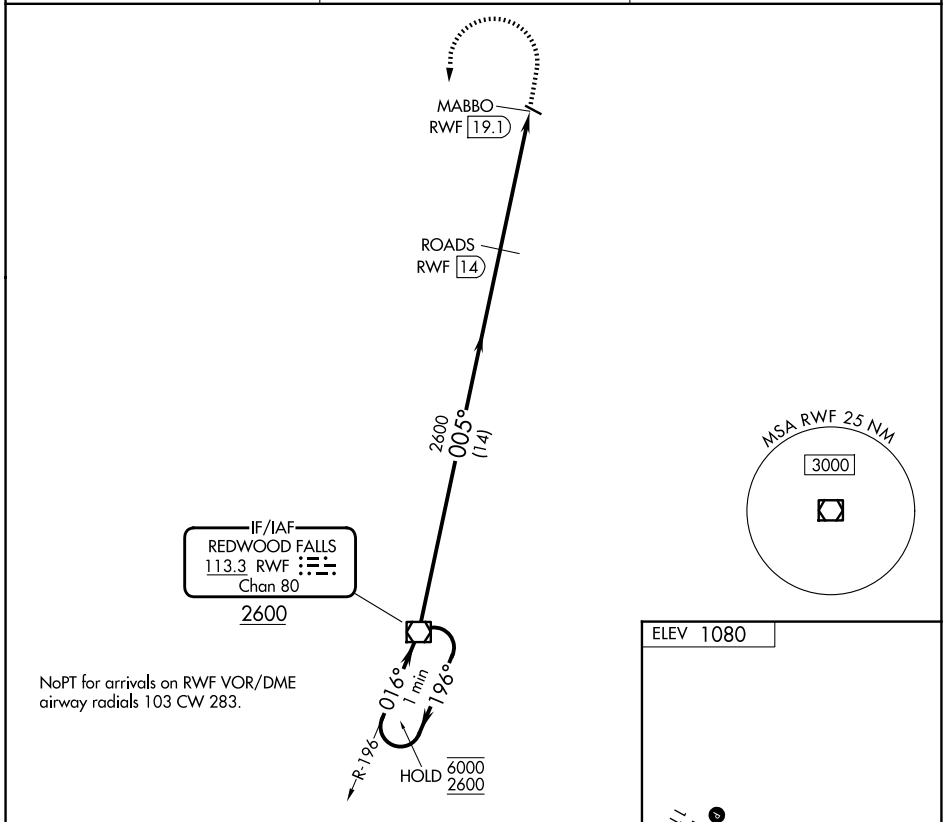


VOR/DME RWF 113.3 Chan 80	APP CRS 005°	Rwy Ldg TDZE Apt Elev N/A N/A 1080
---	------------------------	---

VOR-A
OLIVIA RGNL (OVL)

DME required.	MISSED APPROACH: Climb to 1700 then climbing left turn to 2600 direct RWF VOR/DME and hold.
---------------	---

AWOS-3 119.275	MINNEAPOLIS CENTER 127.1 290.2	UNICOM 122.8 (CTAF) 0
--------------------------	--	---------------------------------



CATEGORY	A	B	C	D
CIRCLING	1620-1	540 (600-1)	1720-1¾ 640 (700-1¾)	1720-2 640 (700-2)

NC-1, 11 JUN 2026 to 09 JUL 2026

NC-1, 11 JUN 2026 to 09 JUL 2026