

# RNAV (GPS) RWY 36

SHELBY COUNTY (2H $\emptyset$ )

APP CRS	Rwy Ldg	<b>4098</b>
<b>002°</b>	TDZE	<b>619</b>
	Apt Elev	<b>619</b>

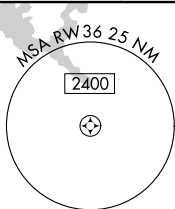
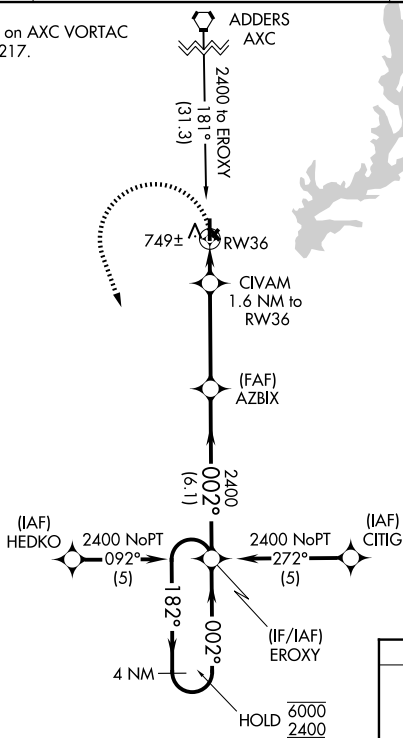
RNP APCH - GPS.

**NA** Circling NA to Rwys 4, 14, 22, and 32. Use Decatur altimeter setting, when not received use Mattoon/Charleston altimeter setting and increase all MDAs 20 feet, and Circling Cat C visibility ¼ SM. Rwy 36 helicopter visibility reduction below 1 SM NA. Straight-in and Circling Rwy 36 NA at night.

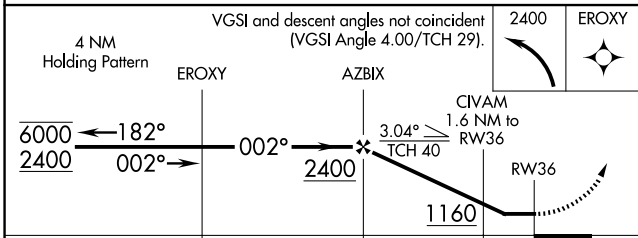
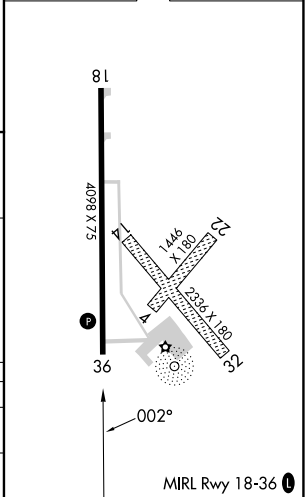
**MISSED APPROACH:**  
Climbing left turn to 2400 direct EROXY and hold.

DEC ASOS <b>126.35</b>	KANSAS CITY CENTER <b>124.3 269.15</b>	UNICOM <b>122.8 (CTAF)</b>
---------------------------	---	-------------------------------

Procedure NA for arrival on AXC VORTAC airway radials 098 CW 217.



ELEV 619	TDZE 619
----------	----------



CATEGORY	A	B	C	D
LNVA MDA	1080-1	461 (500-1)	1080-1 $\frac{3}{8}$ 461 (500-1 $\frac{3}{8}$ )	NA
CIRCLING	1280-1	661 (700-1)	1340-2 721 (800-2)	NA

EC-3, 11 JUN 2026 to 09 JUL 2026

EC-3, 11 JUN 2026 to 09 JUL 2026