

WAAS CH 50514 W20A	APP CRS 200°	Rwy Ldg TDZE 5500 970	Apt Elev 970
--	------------------------	---	------------------------

RNAV (GPS) RWY 20

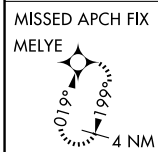
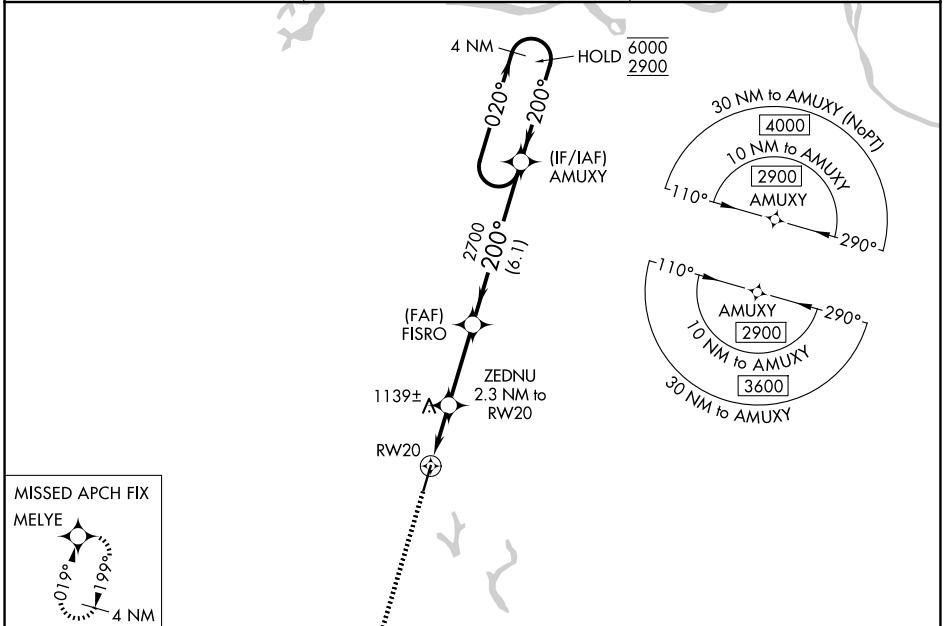
CULLMAN RGNL/FOLSOM FLD (CMD)

RNP APCH - GPS.

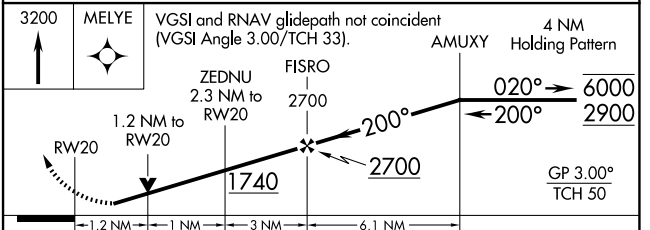
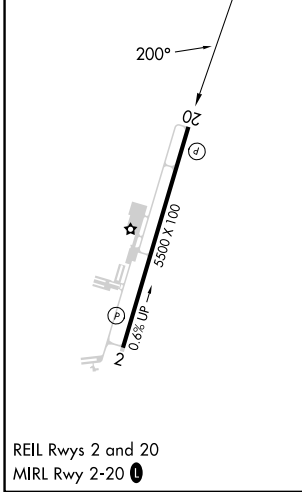
⚠ For uncompensated Baro-VNAV systems, LNAV/VNAV NA below -16°C or above 54°C.
⚠ Circling Rwy 2 NA at night. Rwy 20 helicopter visibility reduction below ¾ SM NA.

MISSED APPROACH: Climb to 3200 direct MELYE and hold.

AWOS-3PT 124.175	HUNTSVILLE APP CON★ 118.05 239.0	UNICOM 122.8 (CTAF) ①
----------------------------	--	---------------------------------



ELEV 970	TDZE 970
-----------------	-----------------



CATEGORY	A	B	C	D
LPV DA	1220-¾		250 (300-¾)	
LNAV/VNAV DA	1378-1½	408 (500-1½)	1378-1¼	408 (500-1¼)
LNAV MDA	1400-1	430 (500-1)	1400-1¼	430 (500-1¼)
CIRCLING	1480-1 510 (600-1)	1500-1 530 (600-1)	1600-1¾ 630 (700-1¾)	1640-2 670 (700-2)

SE-4, 11 JUN 2026 to 09 JUL 2026

SE-4, 11 JUN 2026 to 09 JUL 2026