

# GARLAND SIX DEPARTURE

SC-2, 11 JUN 2026 to 09 JUL 2026

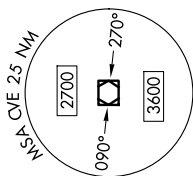
**TOP ALTITUDE:  
ASSIGNED BY ATC**

LONE STAR DEP CON  
125.2 343.65  
CTAF  
122.8

**TAKEOFF MINIMUMS**  
Rwys 17, 35: Standard.

**COWBOY**  
116.2 CVE  
Chan 109

**MAVERICK**  
113.1 TTT  
Chan 78



NOTE: Chart not to scale.

**RADAR and DME required.**

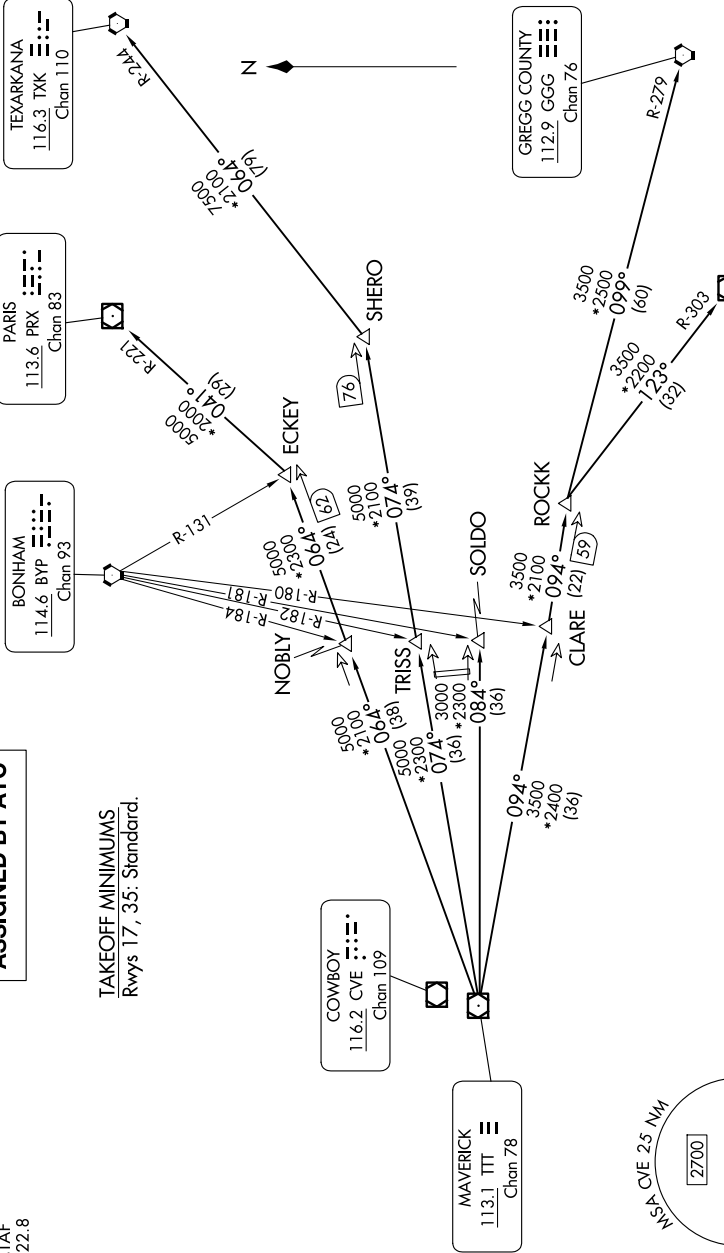
**TEXARKANA**  
116.3 TKX  
Chan 110

**PARIS**  
113.6 PRX  
Chan 83

**BONHAM**  
114.6 BYP  
Chan 93

**GREGG COUNTY**  
112.9 GGG  
Chan 76

**TYLER**  
114.2 TYR  
Chan 89



NOTE: SOLDO Transition: ATC assigned.

(CONTINUED ON FOLLOWING PAGE)

SC-2, 11 JUN 2026 to 09 JUL 2026