

APP CRS	Rwy Ldg <b>4400</b>
<b>213°</b>	TDZE <b>467</b>
	Apt Elev <b>467</b>

# RNAV (GPS) RWY 21

RIPLEY (25M)

RNP APCH - GPS.

▼ Use CRX altimeter setting; when not received, use TUP altimeter setting and increase all MDAs 40 feet. Procedure NA at night. Rwy 21 helicopter visibility reduction below 1 SM NA.

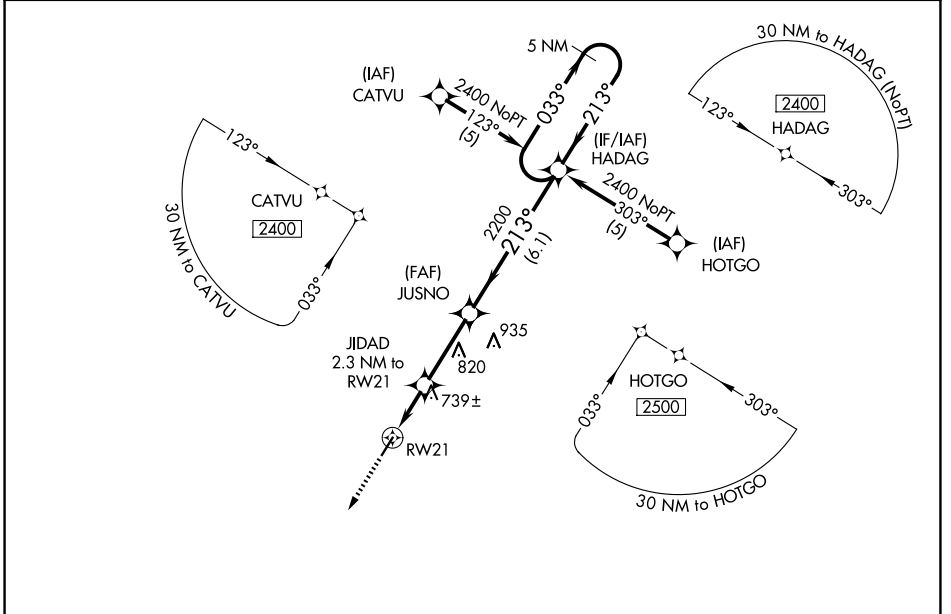
▲ NA

MISSED APPROACH: Climb to 2500 direct CEDAS and hold.

CRX AWOS-3PT  
**118.675**

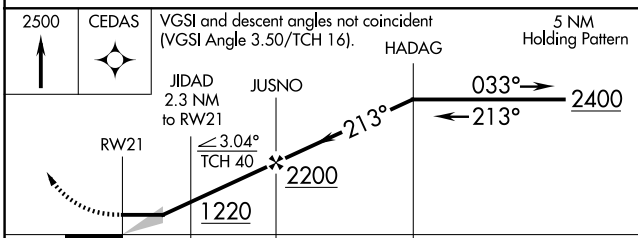
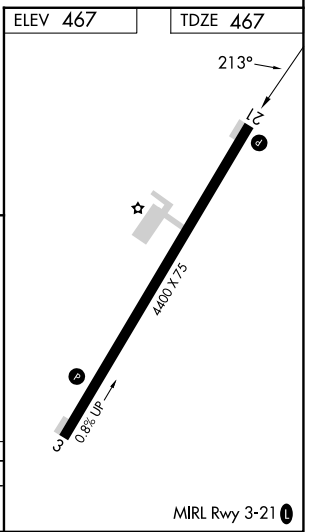
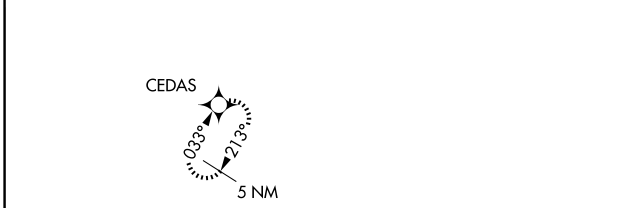
MEMPHIS CENTER  
**135.9 260.6**

UNICOM  
**122.8 (CTAF) 0**



SC-4, 11 JUN 2026 to 09 JUL 2026

SC-4, 11 JUN 2026 to 09 JUL 2026



CATEGORY	A	B	C	D
LNAV MDA	1060-1	593 (600-1)	1060-1¼ 593 (600-1¼)	NA