

WAAS CH 61313 W29A	APP CRS 292°	Rwy Ldg TDZE 137 Apt Elev 142	5350
--	------------------------	---	-------------

RNAV (GPS) RWY 29

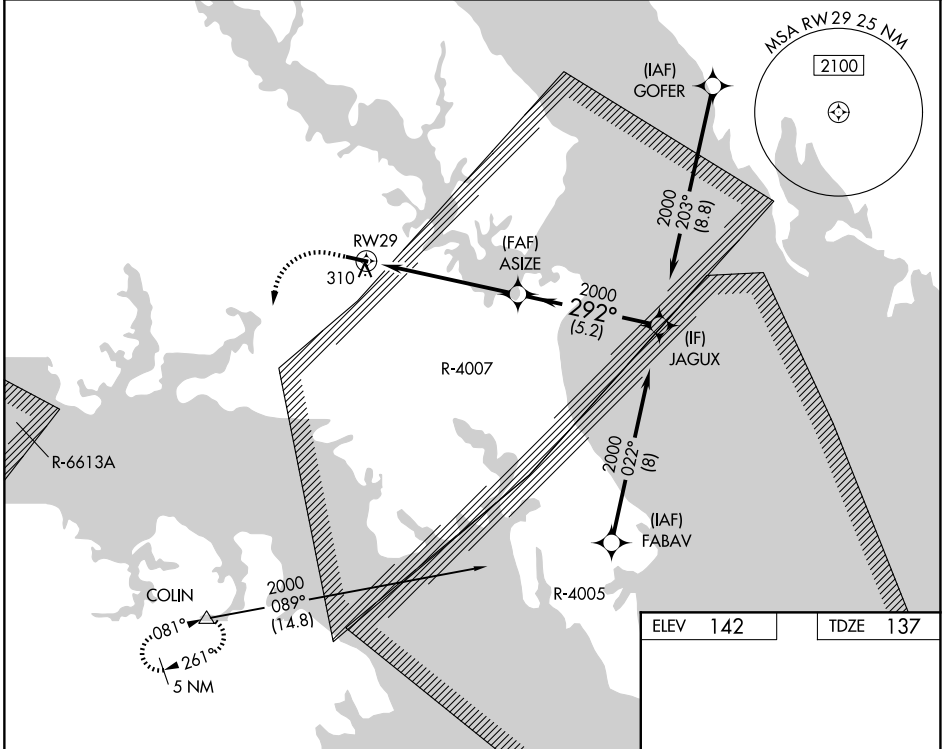
ST MARY'S COUNTY RGNL (2W6)

RNP APCH - GPS.

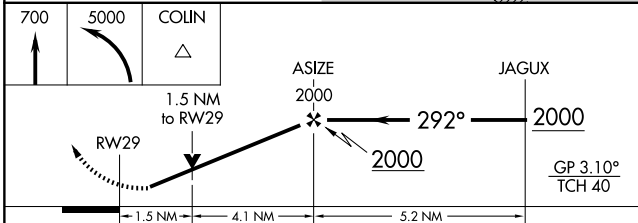
NA Rwy 29 helicopter visibility reduction below 3/4 SM NA. For uncompensated Baro-VNAV systems, LNAV/VNAV NA below -1.5°C or above 54°C. When local altimeter setting not received, use Patuxent River altimeter setting: increase LPV DA to 475 feet and all visibilities 1/8 SM, increase LNAV/VNAV DA to 688 feet and all visibilities 1/4 SM. Increase all MDAs 40 feet and LNAV visibility Cats C/D 1/8 SM.

MISSED APPROACH: Climb to 700 then climbing left turn to 5000 direct COLIN and hold, continue climb in hold to 5000.

AWOS-3 119.575	PATUXENT APP CON ★ 121.0 250.3	UNICOM 123.0 (CTAF)
--------------------------	--	-------------------------------



ELEV 142	TDZE 137
----------	----------



CATEGORY	A	B	C	D
LPV DA	441-7/8 304 (300-7/8)			
LNAV/VNAV DA	654-13/8 517 (600-13/8)			
LNAV MDA	620-1	483 (500-1)	620-13/8	483 (500-13/8)
CIRCLING	660-1	518 (600-1)	840-2 698 (700-2)	840-21/4 698 (700-21/4)

REIL Rwy 11 and 29 **1**
MIRL Rwy 11-29 **1**

NE-3, 11 JUN 2026 to 09 JUL 2026

NE-3, 11 JUN 2026 to 09 JUL 2026