

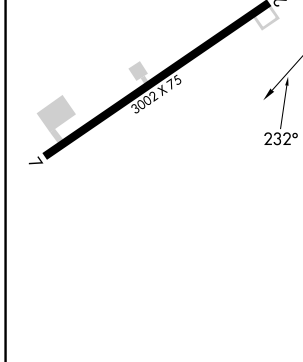
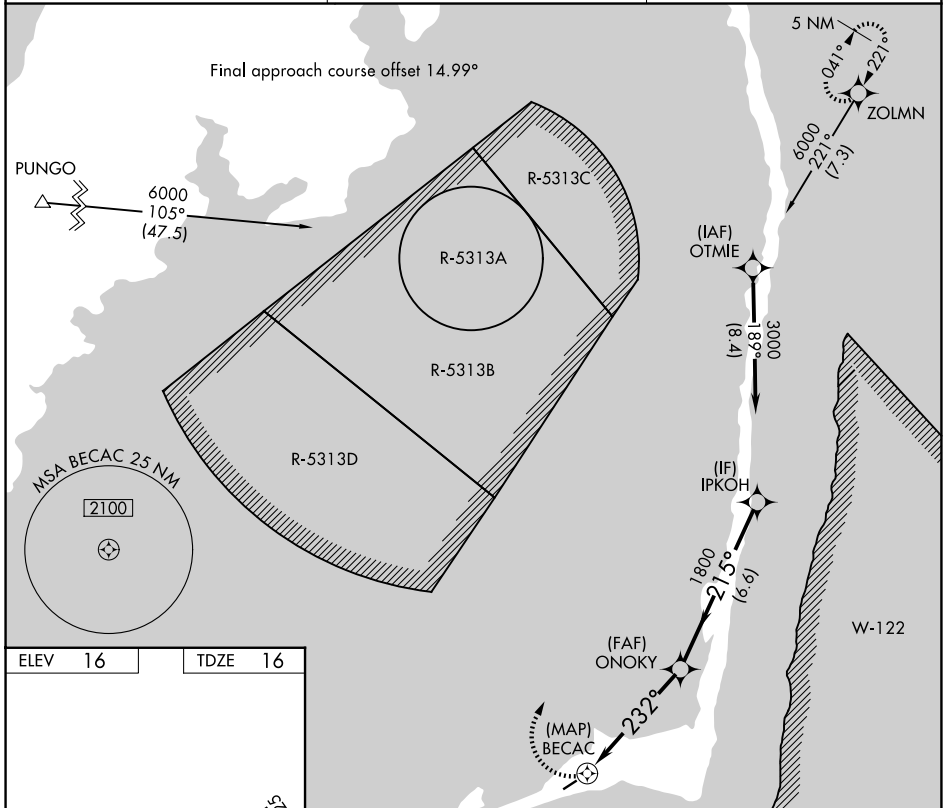
APP CRS 232°	Rwy Ldg TDZE Apt Elev	3002 16 16
------------------------	-----------------------------	---------------------------------------

RNAV (GPS) RWY 25

BILLY MITCHELL (HSE)

RNP APCH - GPS.	MISSED APPROACH: Climbing right turn to 6000 direct ZOLMN and hold, continue climb-in-hold to 6000.
▼ Procedure NA at night. Rwy 25 helicopter visibility reduction below 1 SM NA.	

ASOS 118.375	CHERRY POINT APP CON 119.75 360.775	CTAF 122.9
------------------------	---	----------------------



	6000	ZOLMN	ONOKY	IPKOH	3000
		232°	215°		
			3.00°		
			TCH 40		
	0.5	5 NM	6.6 NM		
CATEGORY	A	B	C	D	
LNAV MDA	520-1	504 (600-1)	520-1½ 504 (600-1½)	NA	
CIRCLING	560-1	544 (600-1)	560-1½ 544 (600-1½)	NA	

SE-2, 11 JUN 2026 to 09 JUL 2026

SE-2, 11 JUN 2026 to 09 JUL 2026