

CLARKSVILLE, TENNESSEE

# RNAV (GPS) X RWY 23

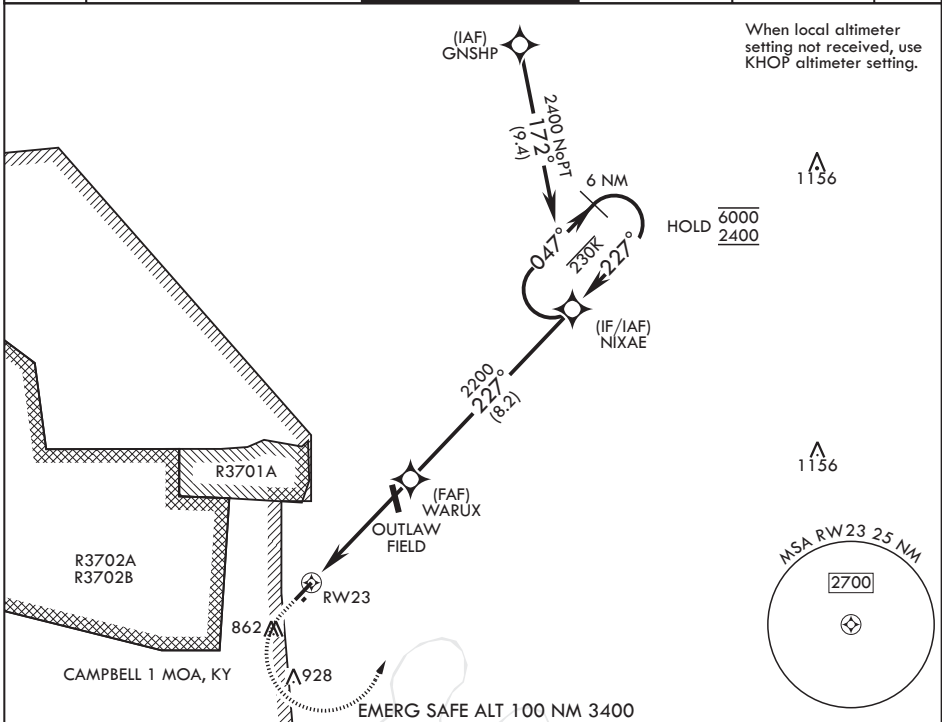
APCH CRS	Rwy Idg	5000
227°	TDZE	587
	Arprt Elev	596

(USA)

SABRE AAF (FORT CAMPBELL) (KEOD)

RNP APCH-GPS	MISSED APPROACH: Climb to 1100 then climbing left turn to 2400 direct NIXAE and hold.
RADAR required for procedure entry.	

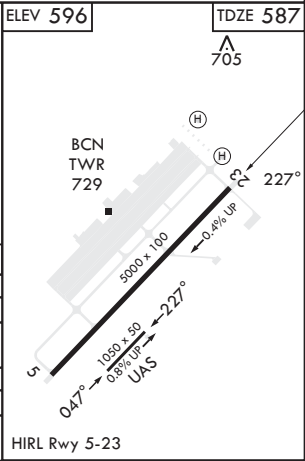
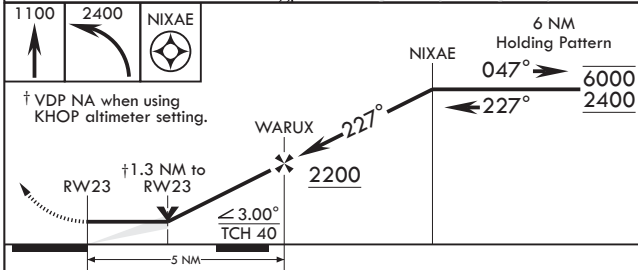
ATIS	CAMPBELL APP CON/DEP CON	TOWER *	GND CON	EAGLE RADIO	ASR
306.5	134.35 307.025	124.675 (CTAF) 290.45	142.975 267.3	139.9 285.7	



When local altimeter setting not received, use KHOP altimeter setting.

SE-1, 11 JUN 2026 to 09 JUL 2026

SE-1, 11 JUN 2026 to 09 JUL 2026



CATEGORY	A	B	C	D
LNAV MDA	1020-1 433 (500-1)	1020-1 433 (500-1)	1020-1 433 (500-1)	1020-1 433 (500-1)
CIRCLING	1140-1 545 (600-1)	1220-1 625 (700-1)	1240-1 645 (700-1)	1240-2 645 (700-2)
KHOP ALTIMETER SETTING MINIMUMS				
LNAV MDA	1040-1 453 (500-1)	1040-1 453 (500-1)	1040-1 453 (500-1)	1040-1 453 (500-1)
CIRCLING	1160-1 565 (600-1)	1240-1 645 (700-1)	1260-1 665 (700-1)	1260-2 665 (700-2)

CLARKSVILLE, TENNESSEE      36°34'N - 87°29'W      SABRE AAF (FORT CAMPBELL) (KEOD)

Amdt 2 14MAY26

# RNAV (GPS) X RWY 23