

CLARKSVILLE, TENNESSEE

RNAV (GPS) X RWY 5

APCH CRS **047°**
 Rwy Idg **5000**
 TDZE **595**
 Arprt Elev **596**

(USA)

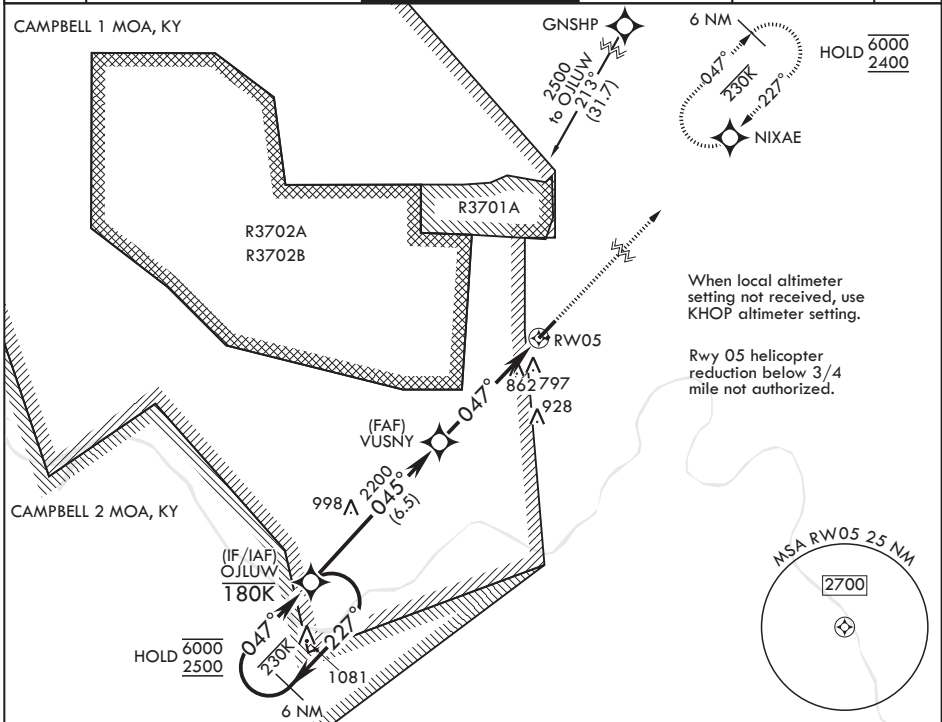
SABRE AAF (FORT CAMPBELL) (KEOD)

RNP APCH-GPS

MISSED APPROACH: Climb to 2400 direct NIXAE and hold.

RADAR required for procedure entry.

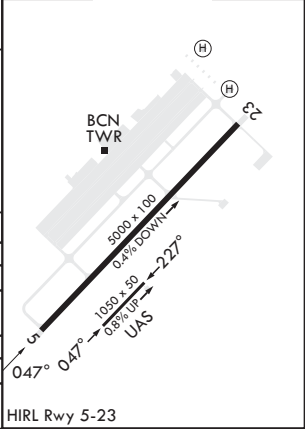
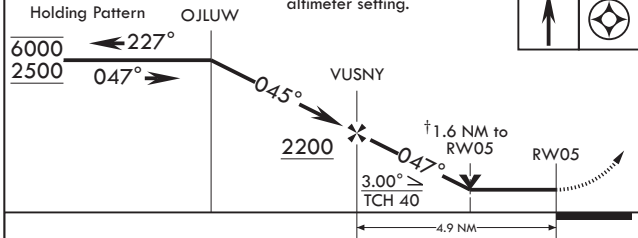
ATIS 306.5	CAMPBELL APP CON/DEP CON 134.35 307.025	TOWER* 124.675 (CTAF) 290.45	GND CON 142.975 267.3	EAGLE RADIO 139.9 285.7	ASR
----------------------	---	--	---------------------------------	-----------------------------------	-----



SE-1, 11 JUN 2026 to 09 JUL 2026

SE-1, 11 JUN 2026 to 09 JUL 2026

6 NM Holding Pattern OJLUW † VDP NA with KHOP altimeter setting. 2400 NIXAE ELEV 596 TDZE 595



CATEGORY	A	B	C	D
LNAV MDA	1160-1 565 (600-1)	565 (600-1)	1160-1 ⁵ / ₈ 565 (600-1 ⁵ / ₈)	565 (600-1 ⁵ / ₈)
CIRCLING	1160-1 565 (600-1)	1220-1 625 (700-1)	1240-1 ³ / ₄ 645 (700-1 ³ / ₄)	1240-2 645 (700-2)
KHOP ALTIMETER SETTING MINIMUMS				
LNAV MDA	1180-1 585 (600-1)	585 (600-1)	1180-1 ³ / ₄ 585 (600-1 ³ / ₄)	585 (600-1 ³ / ₄)
CIRCLING	1180-1 585 (600-1)	1240-1 645 (700-1)	1260-1 ³ / ₄ 665 (700-1 ³ / ₄)	1260-2 665 (700-2)

CLARKSVILLE, TENNESSEE

36°34'N - 87°29'W

SABRE AAF (FORT CAMPBELL) (KEOD)

Amdt 2 14MAY26

RNAV (GPS) X RWY 5