

FORT INDIANTOWN GAP, PENNSYLVANIA

# COPTER ILS or LOC RWY 25

LOC/DME I-MUI <b>111.75</b> Chan <b>54(Y)</b>	APCH CRS <b>250°</b>	Rwy Idg THRE <b>480</b> Arprt Elev <b>487</b>
---	-------------------------	---

[USA]

MUIR AHP (FORT INDIANTOWN GAP) (KMUI)

DME required

- ▼ Use KMDT altimeter when local altimeter not available. When RAV VOR out of service, RNAV required to BAARN.
- ▲ Non-RNAV equipped aircraft expect RADAR vectors.

MISSED APPROACH: Climb to 1700 then climbing left turn to 3000 on RAV VORTAC R-193 to BAARN and hold, continue climb-in-hold to 3000.

ASOS <b>124.175</b>	HARRISBURG APP/DEP CON <b>118.25 269.45</b>	TOWER ★ <b>126.2 (CTAF) 290.325</b>	GND CON <b>135.675 269.525</b>
------------------------	--	--	-----------------------------------

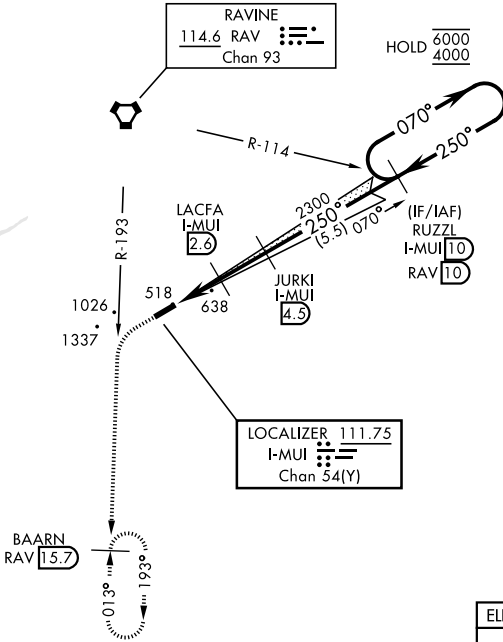
Knots	60	120	180	240	300	360
V/V(fpm)	435	870	1305	1740	2175	2610
Min climb of 435 ft/NM to 1800-Controlling Obstacle 1337'						

## NOT FOR CIVIL USE

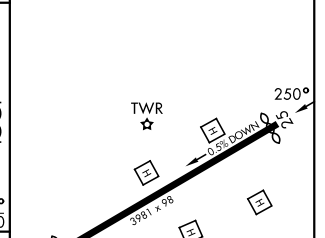
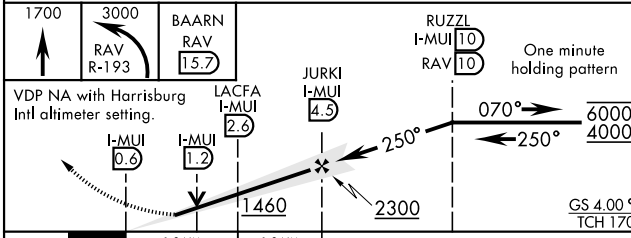
Limit all segments to 90 KIAS.

NE-4, 11 JUN 2026 to 09 JUL 2026

NE-4, 11 JUN 2026 to 09 JUL 2026



ELEV	487	THRE	480
------	-----	------	-----



CATEGORY	COPTER		
S-ILS 25	821-1	334	(400-1)
S-LOC 25	900-1	413	(500-1)
KMDT (HARRISBURG INTL) ALTIMETER SETTING MINIMUMS			
S-ILS 25	885-1½	398	(400-1½)
S-LOC 25	980-1	493	(500-1)

MRL Rwy 07-25

FORT INDIANTOWN GAP, PENNSYLVANIA

40°26'N - 76°34'W MUIR AHP (FORT INDIANTOWN GAP) (KMUI)

Amtd 1 23JAN25

# COPTER ILS or LOC RWY 25