

APP CRS **194°**
 Rwy Ldg **6001**
 TDZE **3701**
 Apt Elev **3706**

RNAV (GPS) RWY 19
 MOORE COUNTY (DUX)

RNP APCH - GPS.

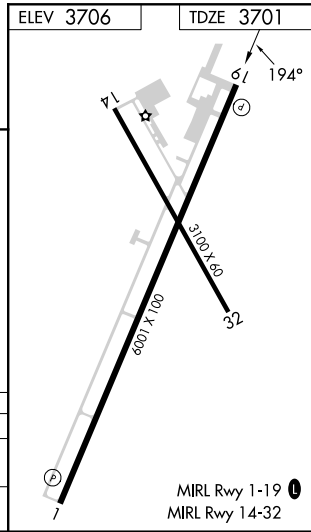
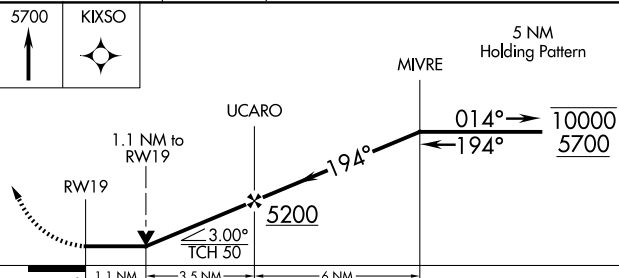
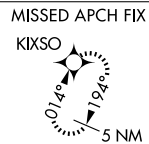
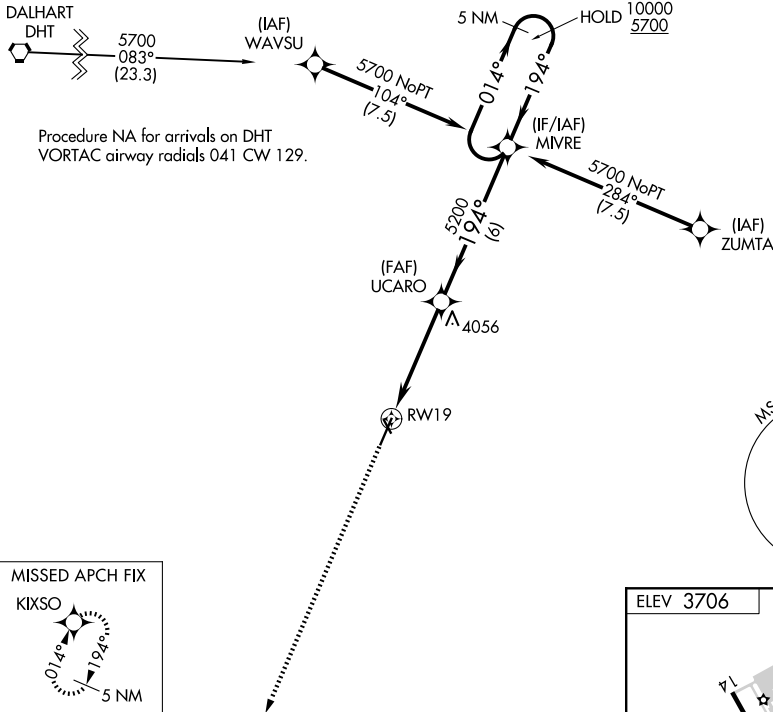
▼ Circling Rwy 14, 32 NA at night.
▲ Rwy 19 helicopter visibility reduction below 3/4 SM NA.

MISSED APPROACH: Climb to 5700 direct KIXSO and hold.

AWOS-3PT
118.075

ALBUQUERQUE CENTER
127.85 285.475

UNICOM
122.8 (CTAF) ①



CATEGORY	A	B	C	D
RNAV MDA	4100-1	399 (400-1)	4100-1 1/8	399 (400-1 1/8)
CIRCLING	4100-1 394 (400-1)	4300-1 594 (600-1)	4400-2 694 (700-2)	4400-2 1/4 694 (700-2 1/4)

SC-2, 11 JUN 2026 to 09 JUL 2026

SC-2, 11 JUN 2026 to 09 JUL 2026