

MESQUITE, TEXAS

AL-6444 (FAA)

26078

WAAS CH <b>78401</b> <b>W36A</b>	APP CRS <b>358°</b>	Rwy Ldg TDZE <b>443</b> Apt Elev <b>447</b>
--	------------------------	---

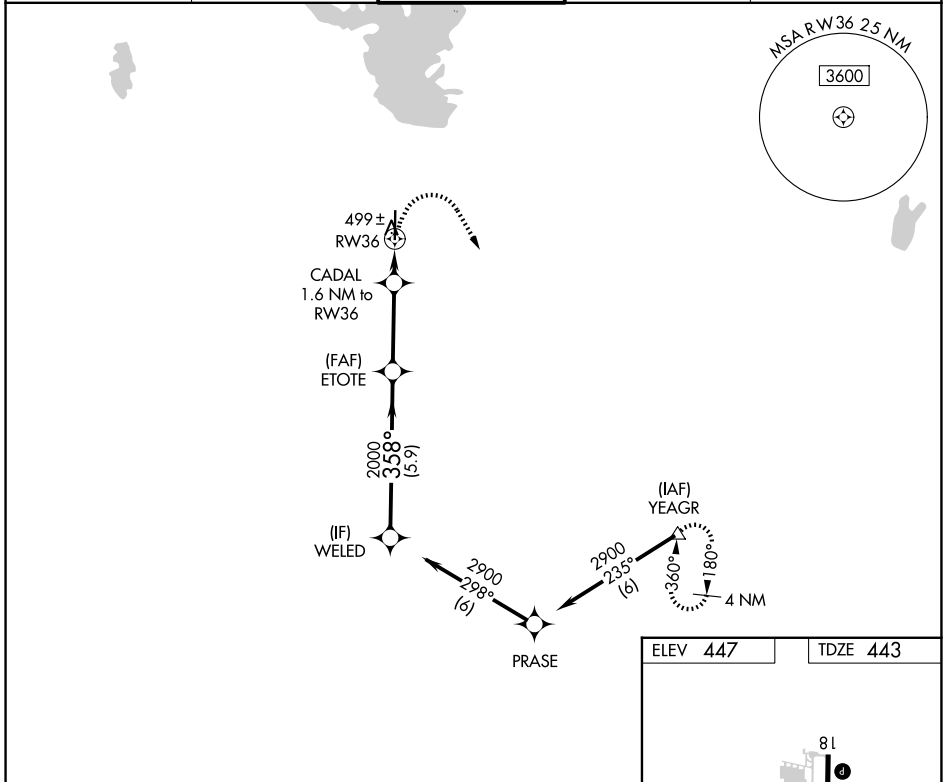
# RNAV (GPS) RWY 36

MESQUITE METRO (HQZ)

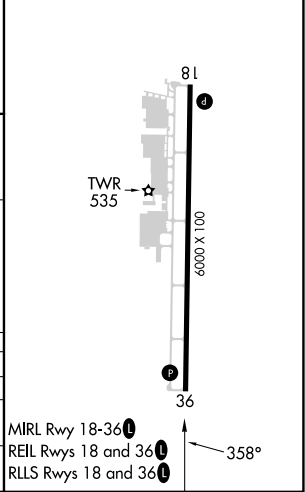
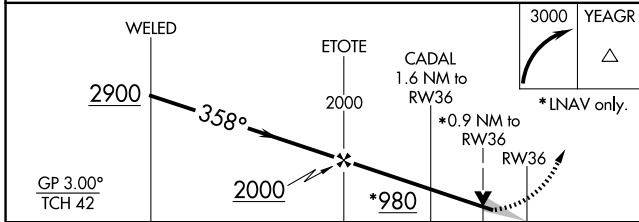
**⚠** DME/DME RNP-0.3 NA. When local altimeter setting not received, use Dallas Love Fld altimeter setting and increase all DA/MDA 60 feet. Increase LPV all Cats visibility to 1 mile, increase Circling Cat C visibility to 2¼ mile. VDP NA when using Dallas Love Fld altimeter setting.

**MISSED APPROACH:**  
Climbing right turn to 3000 direct YEAGR and hold.

AWOS-3 <b>118.175</b>	LONE STAR APP CON <b>125.2 343.65</b>	MESQUITE TOWER ★ <b>120.3 (CTAF) 0</b>	GND CON <b>118.85</b>	UNICOM <b>123.05</b>
--------------------------	--	---	--------------------------	-------------------------



ELEV 447	TDZE 443
----------	----------



CATEGORY	A	B	C	D
LPV DA	693-7/8	250 (300-7/8)		NA
RNAV MDA	760-1	317 (400-1)		NA
CIRCLING	960-1	513 (600-1)	1160-2 713 (800-2)	NA

MESQUITE, TEXAS  
Amdt 2 25JUN15

32°45'N-96°32'W

# MESQUITE METRO (HQZ)

## RNAV (GPS) RWY 36

SC-2, 11 JUN 2026 to 09 JUL 2026

SC-2, 11 JUN 2026 to 09 JUL 2026