

WAAS CH <b>61216</b> <b>W20A</b>	APP CRS <b>200°</b>	Rwy Idg <b>6100</b> TDZE <b>3786</b> Apt Elev <b>3788</b>
--	------------------------	---

# RNAV (GPS) RWY 20

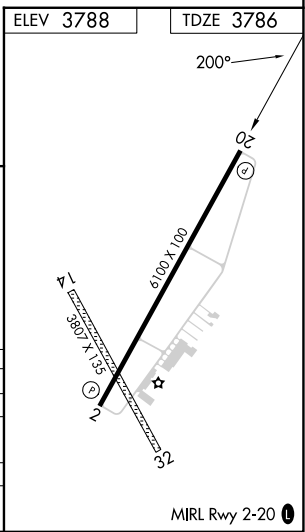
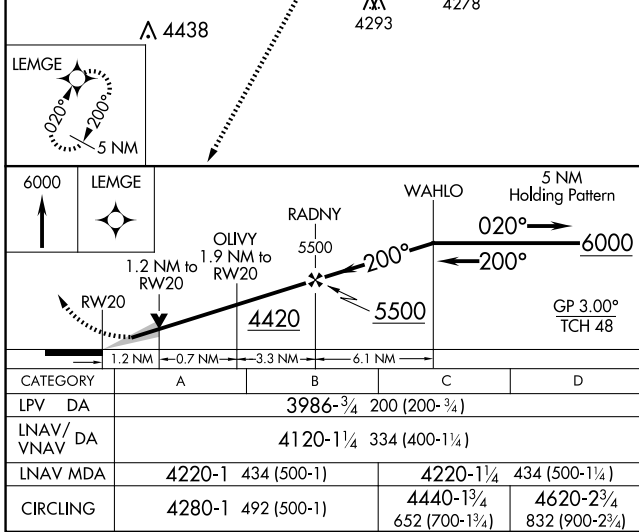
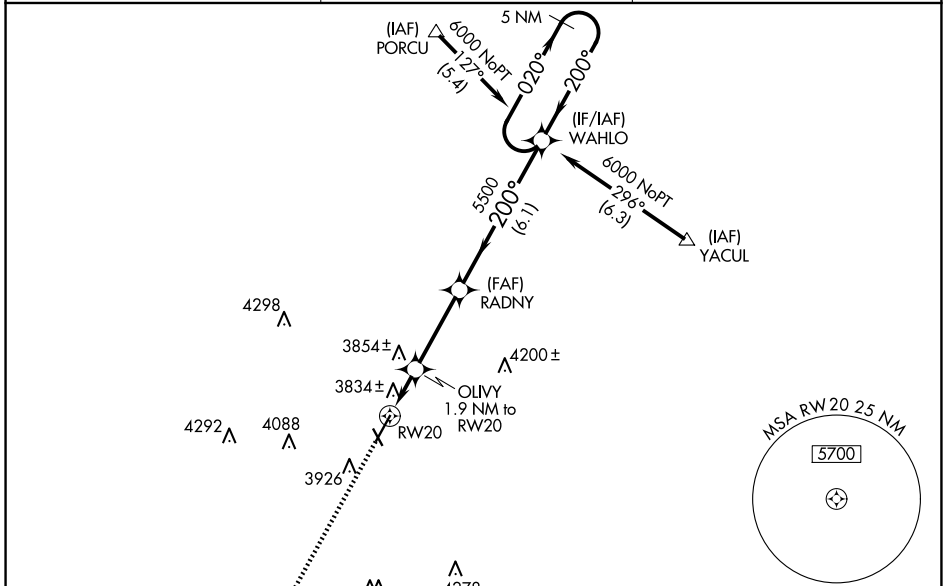
HEREFORD MUNI (HR.X)

RNP APCH - GPS.

⚠ For uncompensated Baro-VNAV systems, LNAV/VNAV NA below -22°C or above 41°C. When local altimeter setting not received, use AMA altimeter setting: increase LPV DA to 4098 feet and all visibilities ¼ SM; increase LNAV/VNAV DA to 4232 feet and all visibilities ¼ SM; increase all MDAs 120 feet and LNAV visibility Cats C and D ½ SM, increase Circling visibility Cat C ½ SM and Cat D ¼ SM. Circling NA to Rwy's 14 and 32. Baro-VNAV and VDP NA when using AMA altimeter setting.

MISSED APPROACH:  
Climb to 6000 direct  
LEMG and hold.

AWOS-3 <b>118.05</b>	AMARILLO APP CON ★ <b>119.5 307.0</b>	UNICOM <b>122.8 (CTAF) ①</b>
-------------------------	--	---------------------------------



SC-2, 11 JUN 2026 to 09 JUL 2026

SC-2, 11 JUN 2026 to 09 JUL 2026