


(OOM5.OOM) 23334

# HOOSIER FIVE DEPARTURE

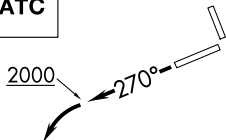
AL-6452 (FAA)


INDIANAPOLIS RGNL (MQJ)  
INDIANAPOLIS, INDIANA

AWOS-3PT  
124.175  
CLNC DEL  
119.25  
INDIANAPOLIS DEP CON  
127.15 317.8

BRICKYARD  
116.3 VHP   
Chan 110

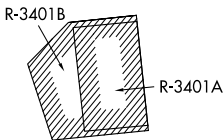
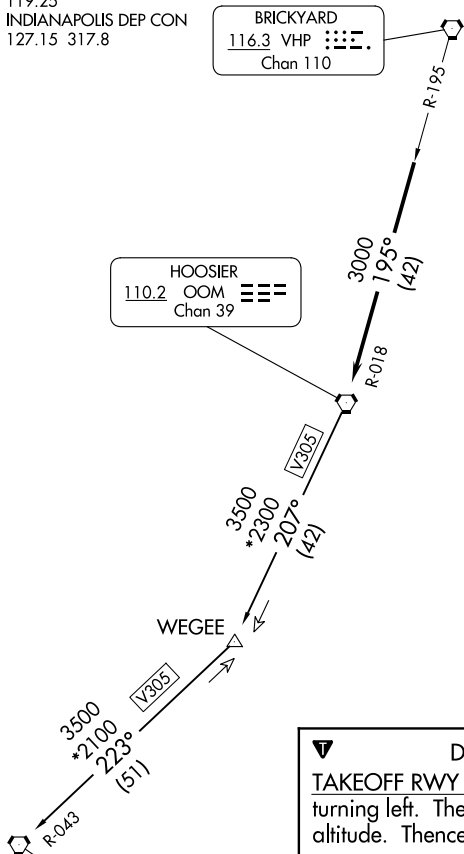
**TOP ALTITUDE:  
ASSIGNED BY ATC**



HOOSIER  
110.2 OOM   
Chan 39

**TAKEOFF MINIMUMS:**  
Rwys 7, 16, 25: Standard.  
Rwy 34: 300-1 or Standard with minimum  
climb of 347' per NM to 1100.

EC-2, 11 JUN 2026 to 09 JUL 2026



**DEPARTURE ROUTE DESCRIPTION**  
TAKEOFF RWY 25: Climb heading 270° to 2000 before turning left. Then on assigned heading to assigned altitude. Thence....  
DEPARTING ALL OTHER AUTHORIZED RUNWAYS: Climb on assigned heading to assigned altitude. Thence....  
....expect RADAR vectors to join VHP R-195 to OOM VORTAC then via transition or assigned route. Expect clearance to requested altitude ten minutes after departure.  
POCKET CITY TRANSITION (OOM5.PXV): From over OOM VORTAC via OOM R-207 to WEGEE, then via PXV R-043 to PXV VORTAC.

- NOTE: RADAR required.
- NOTE: Select appropriate localizer/DME frequency/channel prior to departure.
- NOTE: Turbojets accelerate to 250K until reaching 10000, if unable advise ATC.
- NOTE: Assigned to aircraft with a requested altitude of 11000 or above.

NOTE: Chart not to scale.

EC-2, 11 JUN 2026 to 09 JUL 2026

**HOOSIER FIVE DEPARTURE**  
(OOM5.OOM) 01FEB18

INDIANAPOLIS, INDIANA  
INDIANAPOLIS RGNL (MQJ)