

WAAS CH 56310 W25A	APP CRS 252°	Rwy Ldg 6005 TDZE 861 Apt Elev 862
--	------------------------	---

RNAV (GPS) RWY 25

INDIANAPOLIS RGNL (MQJ)

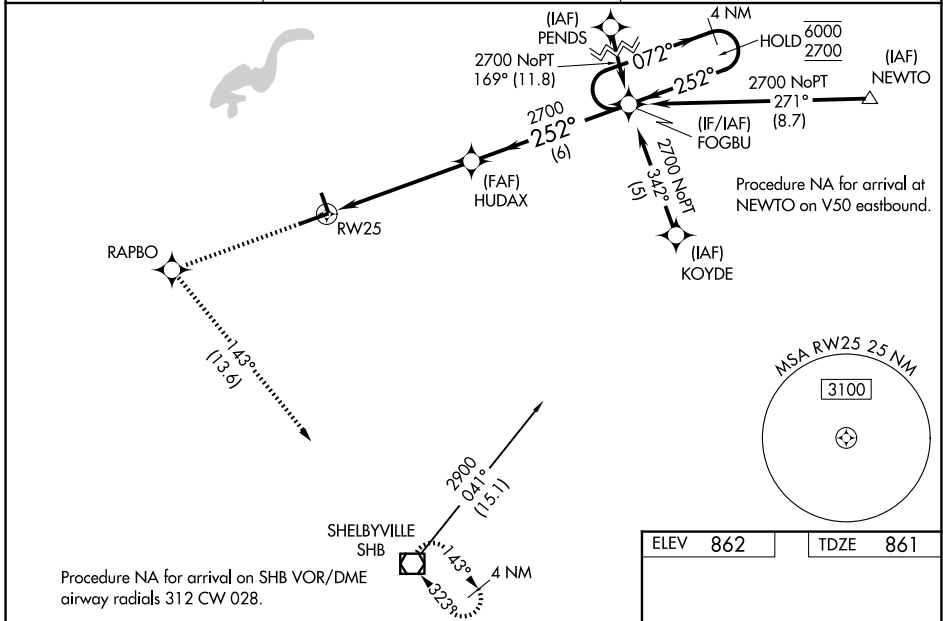
RNP APCH - GPS.

Baro-VNAV and VDP NA when using IND alimeter setting. For uncompensated Baro-VNAV systems, LNAV/VNAV NA below -16°C or above 54°C. Rwy 25 helicopter visibility reduction below 3/4 SM NA. When local alimeter setting not received, use IND alimeter setting and increase LPV DA to 1215 feet; increase LNAV/VNAV DA to 1318 feet and all visibilities 1/8 SM. Increase all MDAs 60 feet and LNAV visibility Cat C/D 1/8 SM and Circling visibility Cat C/D 1/4 SM. For inop ALS, increase LPV all Cats visibility to 7/8 SM; increase LNAV/VNAV all Cats visibility to 1 1/8 SM; and increase LNAV Cat A and Cat B visibility to 1 SM, and Cat C and Cat D visibility to 1 3/8 SM.

MALSRL

MISSED APPROACH: Climb to 2900 direct RAPBO and on track 143° to SHB VOR/DME and hold.

AWOS-3PT 124.175	INDIANAPOLIS APP CON 127.15 317.8	UNICOM 122.975 (CTAF)
----------------------------	---	---------------------------------



2900	RAPBO	tr 143°	SHB	HUDAX	FOGBU	4 NM Holding Pattern
1.4 NM to RW25				252°	072°	6000 / 2700
1.4 NM	4.1 NM	6 NM		2700		GP 3.00° TCH 53
CATEGORY	A	B	C	D		
LPV DA		1160-3/4	299 (300-3/4)			
LNAV/VNAV DA		1263-3/4	402 (500-3/4)			
LNAV MDA	1360-3/4	499 (500-3/4)	1360-1	499 (500-1)		
CIRCLING	1360-1	498 (500-1)	1360-1 1/2	1660-2 1/2	798 (800-2 1/2)	

ELEV 862	TDZE 861
----------	----------

Obstacle chart for RWY 25 showing terrain (H), obstructions (star, circle with X), and MALSRL. Key features include:

- Obstruction at 34' height, 252° from RWY 25.
- Obstruction at 34' height, 390° from RWY 25.
- MALSRL at 252° from RWY 25.
- Obstruction at 252' height, 6005 X 100.