

WAAS CH 45634 W34A	APP CRS 342°	Rwy Ldg TDZE Apt Elev	3902 857 862
--	------------------------	-----------------------------	---

RNAV (GPS) RWY 34

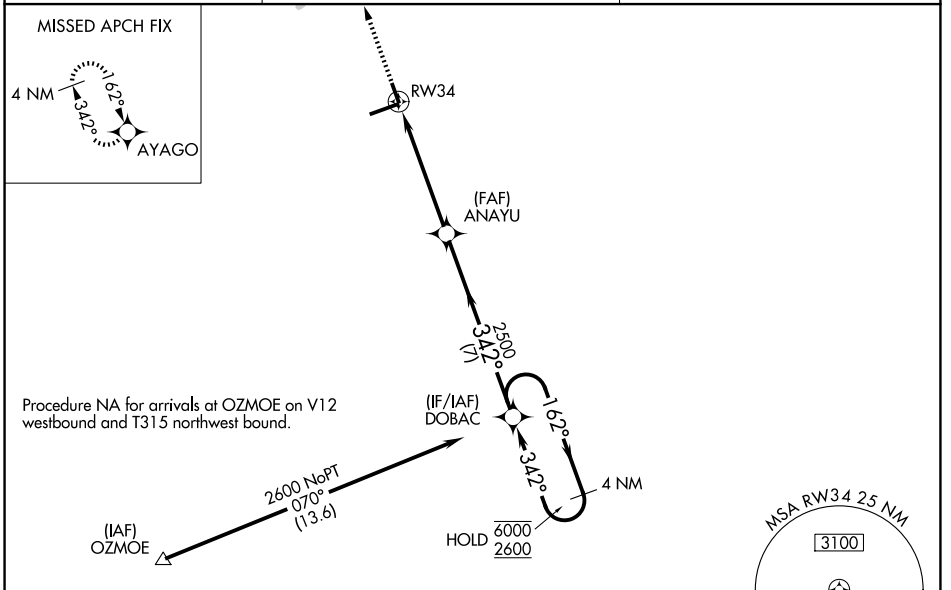
INDIANAPOLIS RGNL (MQJ)

RNP APCH - GPS.

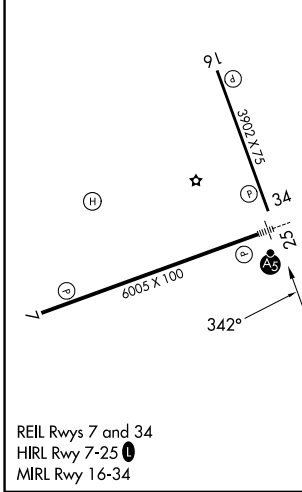
⚠ For uncompensated Baro-VNAV systems, LNAV/VNAV NA below -16°C or above 54°C. Rwy 34 helicopter visibility reduction below 3/4 SM NA. When local altimeter setting not received, use IND altimeter setting and increase LPV DA to 1163 feet and all visibilities 1/8 SM. Increase LNAV/VNAV DA to 1185 feet and all visibilities 1/8 SM. Increase all MDAs 60 feet and LNAV visibility Cat C/D 1/8 SM, and Circling visibility Cat D 1/4 SM. Baro-VNAV and VDP NA when using IND altimeter setting.

MISSED APPROACH:
Climb to 2500 direct AYAGO and hold.

AWOS-3PT 124.175	INDIANAPOLIS APP CON 127.15 317.8	UNICOM 122.975 (CTAF) 0
----------------------------	---	-----------------------------------



ELEV 862	TDZE 857
----------	----------



2500	AYAGO	VGSi and RNAV glidepath not coincident (VGSi Angle 3.00/TCH 49).		4 NM Holding Pattern
		ANAYU	2500	DOBAC
		1.3 NM to RW34	342°	162° → 6000
			2500	← 342° 2600
		1.3 NM	3.8 NM	7 NM
CATEGORY	A	B	C	D
LPV DA	1108-3/4		251 (300-3/4)	
LNAV/VNAV DA	1130-7/8		273 (300-7/8)	
LNAV MDA	1320-1	463 (500-1)	1320-1 3/8	463 (500-1 3/8)
CIRCLING	1340-1	478 (500-1)	1360-1 1/2 498 (500-1 1/2)	1660-2 1/2 798 (800-2 1/2)

GP 3.00° TCH 33

EC-2, 11 JUN 2026 to 09 JUL 2026

EC-2, 11 JUN 2026 to 09 JUL 2026